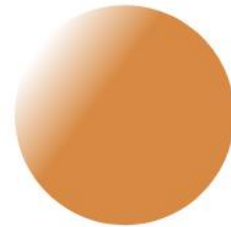


Welcome to Today's WCET Webcast



SEPTEMBER 21, 2023

The webcast will begin shortly.

There is no audio being broadcast at this time.

An archive of this webcast will be available on the WCET website next week.



Community

Equity

Policy

Practice

wcet.wiche.edu



wcet

Webcast

Culturally Responsive Teaching and Learning

September 21, 2023

Welcome!

- Slides can be downloaded via the link in chat.
- Please use the **Question** box for questions and **Chat** for other information exchange.
- Follow the Twitter feed: #WCETWebcast.
- Slides, recording, and shared resources will be emailed to attendees.



Megan Raymond

Senior Director, Membership & Programs
WCET

mraymond@wiche.edu

[@meraymond](https://twitter.com/meraymond)

Today's Moderator

Justin Louder

Associate Vice President for
Academic Innovation

Anthology Inc.

justin.louder@anthology.com



Speakers



ERIN BENTRIM

Senior Education & Training
Specialist - Assessment,
Global Education Services
Anthology Inc.



NORMA HOLLEBEKE

Senior Manager, Network
Programs and Services
Every Learner Everywhere
WCET



SHANI SUBER

Dean of E-learning
Effectiveness and
Enhancement
Dallas College

Questions from the Audience



Contact Information



ERIN BENTRIM

ebentrim@anthology.com

[LinkedIn](#)



NORMA HOLLEBEKE

nhollebeke@wiche.edu

[LinkedIn](#)



SHANI SUBER

shani@dcccd.edu

[LinkedIn](#)

Additional Information and Resources



wcet

Webcast

The webcast recording and additional resources will be available in the next week: wcet.wiche.edu/events/webcasts.

Learn more and stay connected:

Visit wcet.wiche.edu to explore our Policy and Practice work, Events, Membership, and Sponsorship.

Learn more about the benefits of joining our community: wcet.wiche.edu/join-us

WCET is the leader in the practice, policy & advocacy of digital learning in higher education.



Community

Equity

Policy

Practice

Thank you, WCET Annual Sponsors

Learn more:

[wcet.wiche.edu/
sponsorship/wcet-sponsors](http://wcet.wiche.edu/sponsorship/wcet-sponsors)

Champion Sponsor



Leader Sponsor



Friend Sponsor



Supporter Sponsor



Thank you, Supporting Members

Brigham Young University

The California State University

Colorado State University

Michigan State University

The University of Arizona

University of Florida

Supporting members make an additional investment and support WCET's mission to advance the effective use of technology for teaching and learning.

Thank you for attending!

wcet.wiche.edu

