



wcet

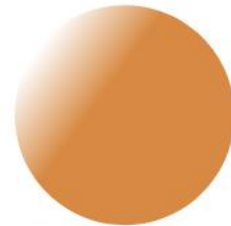
Webcast

# Artificial Intelligence and Higher Education: Where Are We Going and How Are We Getting There?

February 15, 2023



# Welcome to Today's WCET Webcast



FEBRUARY 15, 2023

The webcast will begin shortly.

There is no audio being broadcast at this time.

An archive of this webcast will be available on the WCET website next week.





Community

Equity

Policy

Practice

[wcet.wiche.edu](http://wcet.wiche.edu)

# Welcome!

- Slides can be downloaded via the link in chat.
- If you have a question during the presentation, please add it to the question box. Use the chat for other information exchange.
- Follow the Twitter feed: #WCETWebcast.
- Slides and shared resources will be emailed to attendees next week.



**Megan Raymond**

Senior Director, Membership & Programs  
WCET

[mraymond@wiche.edu](mailto:mraymond@wiche.edu)

[@meraymond](https://twitter.com/meraymond)



# Today's Moderator

## **Van Davis**

Chief Strategy Officer, WCET

Service Design and Strategy Officer,  
Every Learner Everywhere

[vdavis@wiche.edu](mailto:vdavis@wiche.edu)

[@HistoryDoc](#)



# Speakers



**GEORGE SIEMENS**

*Professor and Director of the Center for  
Change and Complexity in Learning (C3L)  
University of South Australia*

*Professor of Practice in Psychology  
The University of Texas at Arlington*



**KAREN WATTÉ**

*Director, Course Development and Training  
Oregon State University Ecampus*





# Oregon State University

- Public, research institution
  - Land, sea, space, and sun grant institution.
- OSU Ecampus
  - 101 degrees & certs online.
  - 1 in 3 OSU students is Ecampus.



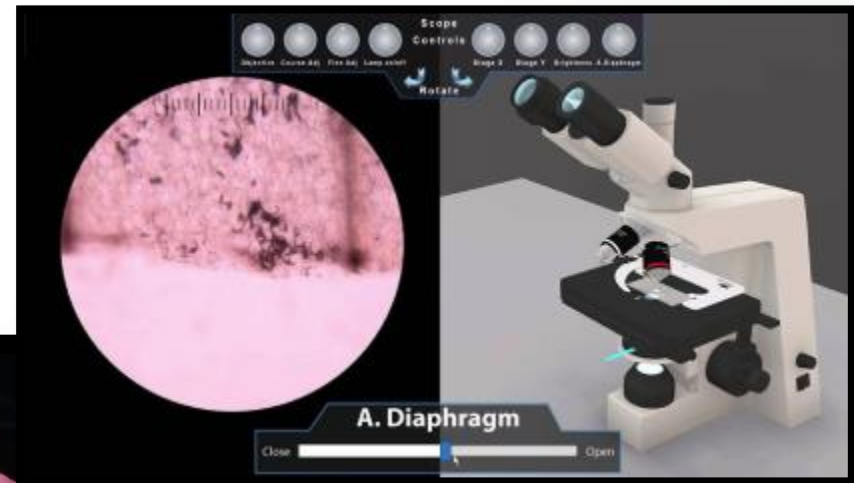


$X = \# \text{ of Texts / Hour}$      $E(X) = 8 \text{ texts per Hour}$   
 $\lambda = 8$      $SD(X) = \sqrt{V(X)} = \sqrt{\lambda} \cdot \sqrt{8} = 2.83 \text{ tex}$

PMF  $P(X=x) = \frac{\lambda^x e^{-\lambda}}{x!}$   
 $P(X=x) = \frac{8^x e^{-8}}{x!}$

$P(X=10) = \frac{8^{10} e^{-8}}{10!} = 0.09926$

$P(X \leq 3) = P(X=0) + P(X=1) + P(X=2) + P(X=3)$   
 $\frac{8^0 e^{-8}}{0!} + \frac{8^1 e^{-8}}{1!} + \frac{8^2 e^{-8}}{2!} + \frac{8^3 e^{-8}}{3!}$





# Institutional Response

- Embrace change!
- Recognize importance of accountability.
- Considerations related to academic integrity.



# Faculty Conversation





# Practical Response

- Clarify *your* expectations in your syllabus.
- Analyze & update your assessments.



# Consider adjusting assessments to...

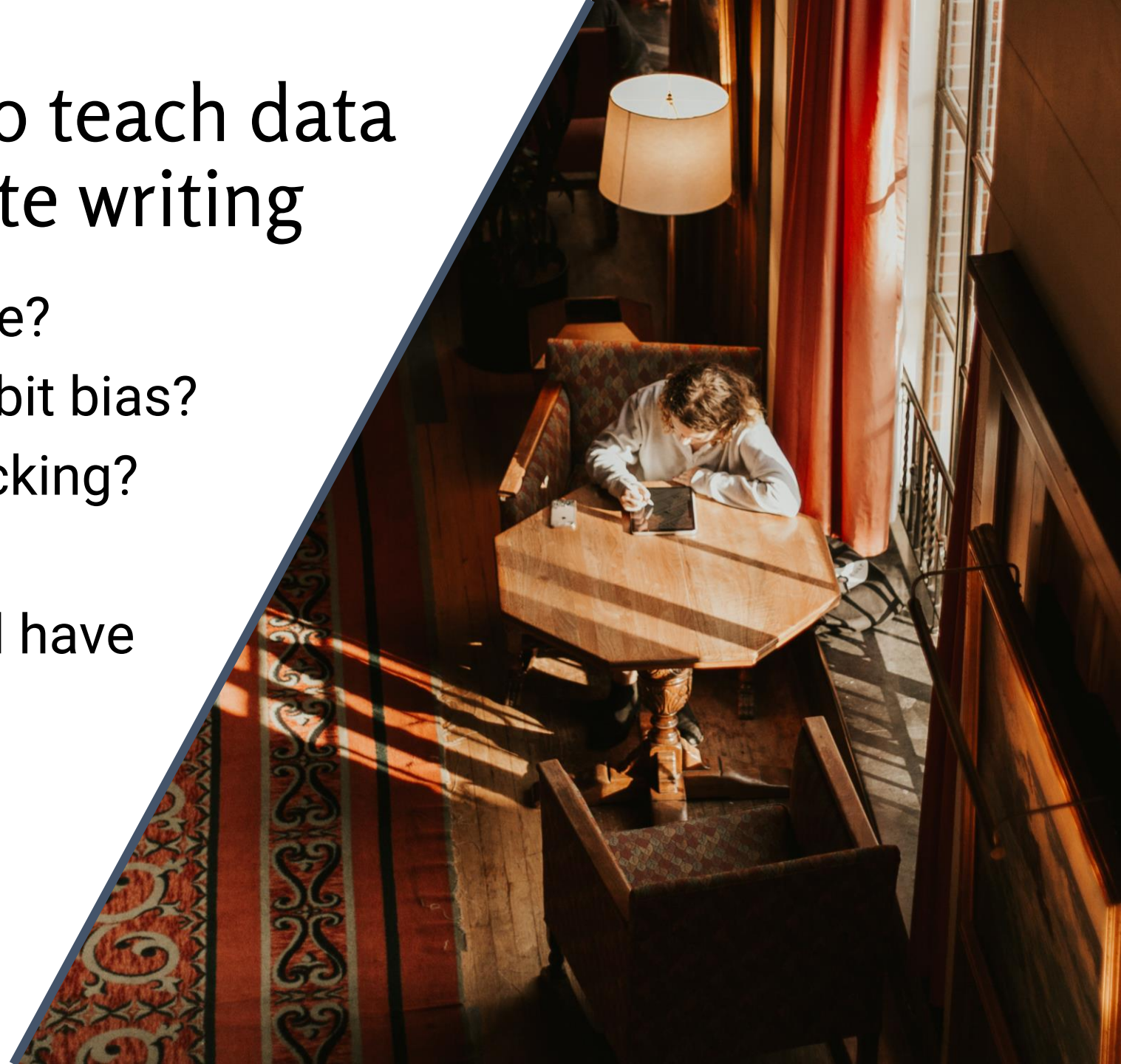
- Connect course content, course discussions, or personal experiences.
- Assess the process.
- Incorporate critical thinking & application.
- Add interaction with the physical world.
- Require sensory – visual or auditory – input.
- Include analysis of information in unique files.
- Incorporate numerical calculations.





# Integrate AI tools to teach data literacy and evaluate writing

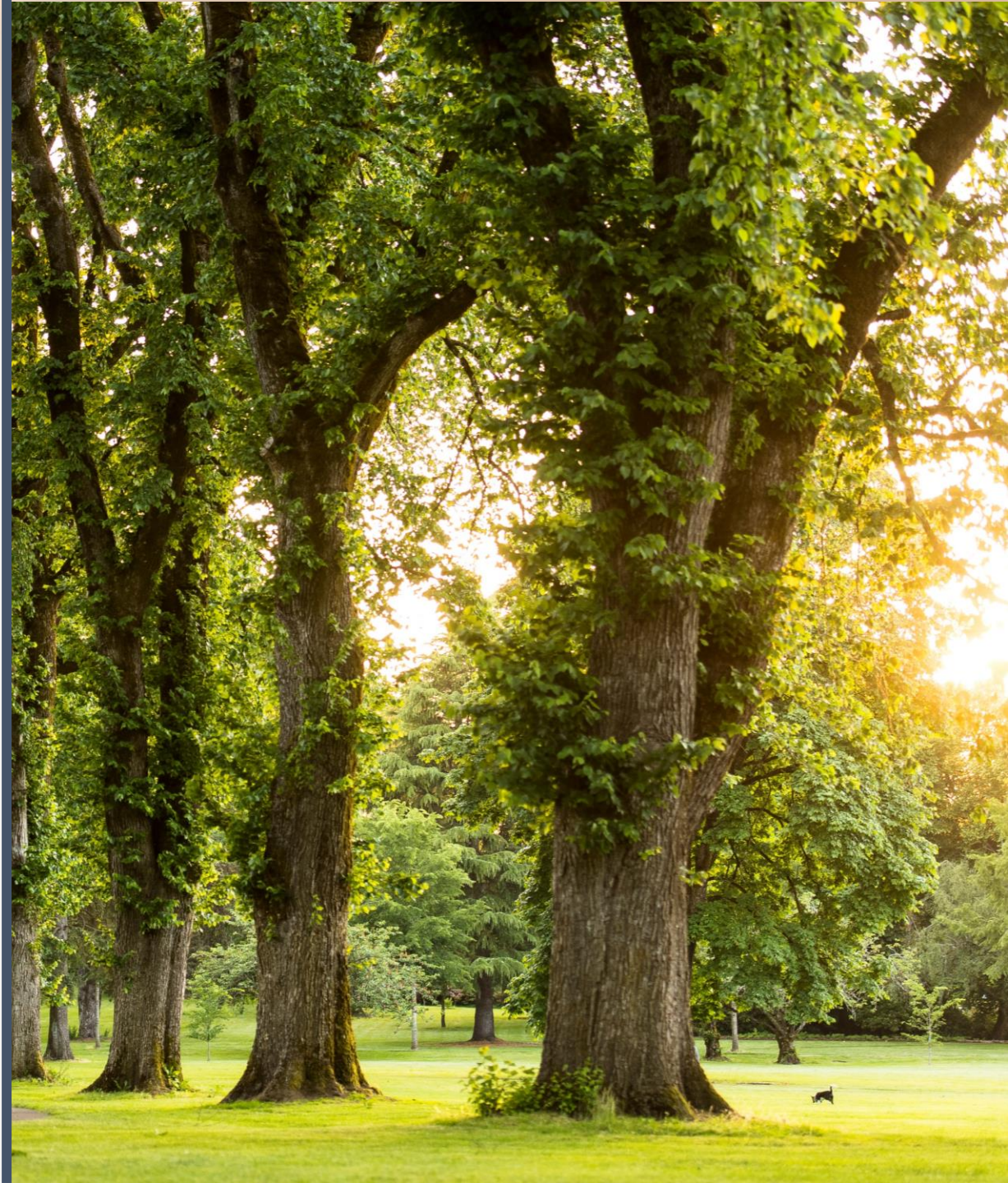
- Is this response accurate?
- Does this response exhibit bias?
- What is the response lacking?
  
- Consider availability and have alternatives ready.





# Impact on profession

- Potentially create objectives, instructions, guides, etc.
- Brainstorm prompts; gather research questions.
- Help overcome writer's block.
- Grading?
- Research? Consider authorship requirements for journals.





# Intelligence & the human condition

- Solving novel problems.
- Consciousness.
- Human unpredictability.



# Questions from the Audience





# Contact Information



**GEORGE SIEMENS**  
[gsiemens@gmail.com](mailto:gsiemens@gmail.com)



**KAREN WATTÉ**  
[karen.watte@oregonstate.edu](mailto:karen.watte@oregonstate.edu)  
[linkedin.com/in/karenwatte](https://www.linkedin.com/in/karenwatte)



# Additional Information and Resources



wcet

**Webcast**

The webcast recording and additional resources will be available in the next week: [wcet.wiche.edu/events/webcasts](http://wcet.wiche.edu/events/webcasts).



# Learn more and stay connected:

Visit [wcet.wiche.edu](https://wcet.wiche.edu) to explore our Policy and Practice work, Events, Membership, and Sponsorship.

Learn more about the benefits of joining our community: [wcet.wiche.edu/join-us](https://wcet.wiche.edu/join-us)

*WCET is the leader in the practice, policy & advocacy of digital learning in higher education.*

Community

Equity

Policy

Practice



# Upcoming WCET Events

Learn more and register: [wcet.wiche.edu/events](https://wcet.wiche.edu/events)

- Member Closer Conversation on AI – February 24, Noon MT.
  - *At capacity, register to be waitlisted.*
- State of the Skills Gap 2023: Challenges and Opportunities in Supporting a Post-Pandemic Workforce – February 22, Noon MT.
- Digital Learning Definitions:
  - Webcast – March 15, 11 AM MT.
  - Member Closer Conversation – March 31, Noon MT.





# Elements of Evolving Business Models of Higher Education

---

WCET Virtual Summit  
Exclusively for WCET Members  
March 9, 2023

[bit.ly/WCET-Summit-2023](https://bit.ly/WCET-Summit-2023)



# Thank you WCET Annual Sponsors

Learn more:

[wcet.wiche.edu/  
sponsorship/wcet-sponsors](http://wcet.wiche.edu/sponsorship/wcet-sponsors)



anthology



Honorlock



BibliU

WILEY University Services



QUOTTLY

straighterline™

coursera for campus

Harmonize

iDesign

InScribe



D2L

LearningMate™



MINERVA®

ENGEN



CAMBRIDGE  
UNIVERSITY PRESS

Lightcast

INTERACT123

MINDWIRES



# Thank you, Supporting Members

**Brigham Young University**

**The California State University**

**Colorado State University**

**Michigan State University**

**The University of Arizona**

**University of Florida**

*Supporting members make an additional investment and support WCET's mission to advance the effective use of technology for teaching and learning.*





# Thank you for attending!

*[wcet.wiche.edu](http://wcet.wiche.edu)*

