



Community

Equity

Policy

Practice

[wcet.wiche.edu](http://wcet.wiche.edu)

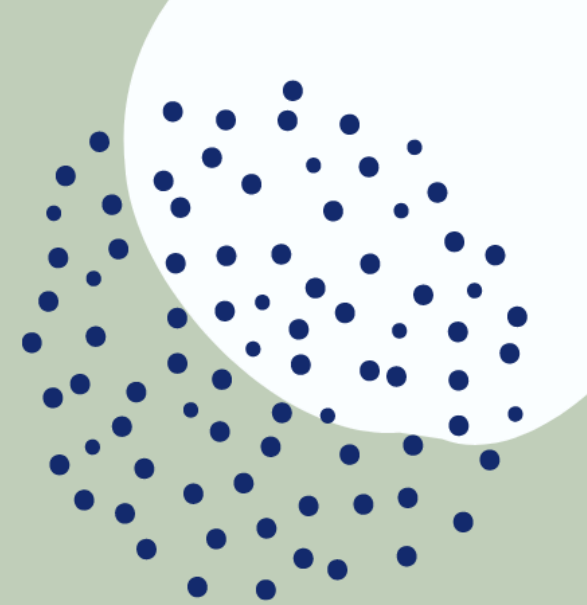
# Welcome to today's #WCETWebcast

**September 21, 2022**

The webcast will begin shortly.

There is no audio being broadcast at this time.

An archive of this webcast will be available on the WCET website next week.

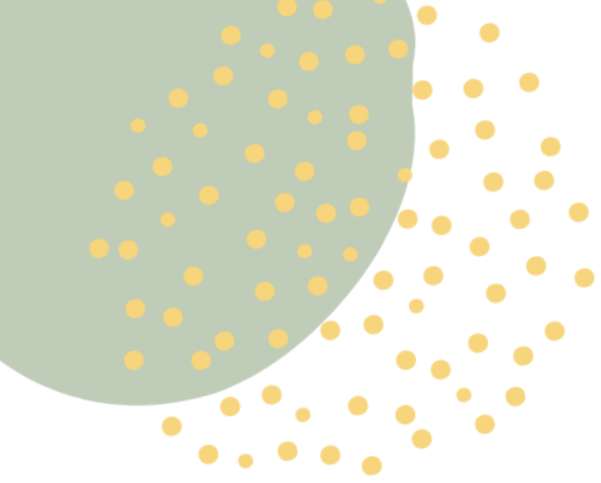




# Navigating the Confusing Array of Digital Learning Definitions

September 21, 2022





*Use the question box for questions and information exchange.*

*Slides and shared resources will be emailed to attendees next week.*

*Slides can be downloaded via the link in chat.*

*Follow the Twitter feed: #WCETWebcast.*

# Welcome!



Megan Raymond  
Senior Director, Membership & Programs

WCET

[mraymond@wiche.edu](mailto:mraymond@wiche.edu)

[@meraymond](#)





# Questions from the Audience

*If you have a question during  
the presentation, please add it  
to the question box.*

*We will monitor the question  
box and have time for Q&A at  
the end of the webcast.*



# Moderator

## **Shannon Riggs**

Executive Director of Academic Programs  
and Learning Innovation

Oregon State University Ecampus

[@ShannonRiggs](https://twitter.com/ShannonRiggs)



# Speakers



**Cheryl Dowd**

Senior Director, State  
Authorization Network &  
WCET Policy Innovations



**Nicole Johnson**

Executive Director  
Canadian Digital Learning  
Research Association



**Jeff Seaman**

Director  
Bay View Analytics



# Survey Partners



Canadian Digital Learning  
Research Association  
Association canadienne de  
recherche sur la formation en ligne



Bay View Analytics

*With the assistance of:*





# Survey Overview

- Responses from 987 faculty and 1,051 administrators.
- Representing 870 different institutions from all fifty states, Puerto Rico, and the District of Columbia.
- Two complementary national samples:
  - The primary sample used email lists from a commercial source, Market Data Retrieval.
  - Second sample was constructed from open calls for participants sent to the memberships of WCET, OLC, Quality Matters, and UPCEA.
- General personal information (such as name, email address, and IP address) was removed from all survey responses prior to analysis.



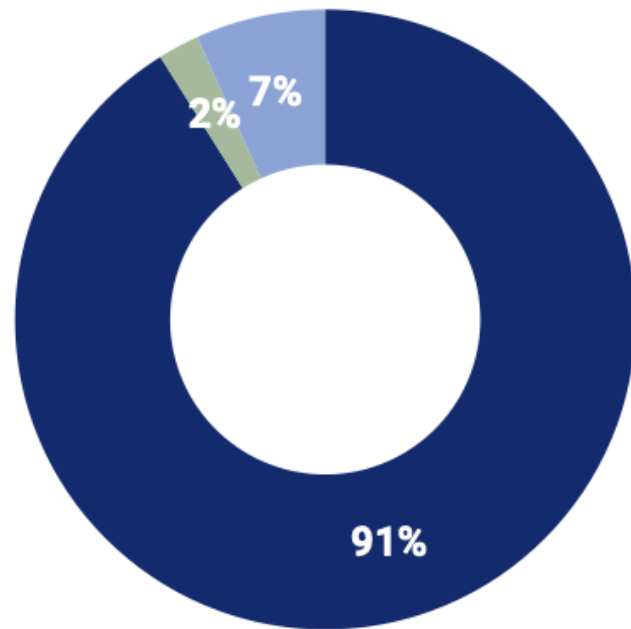
# Survey Definitions

TERM	DEFINITION
Online learning	All instruction and interaction is fully online (synchronous or asynchronous).
Hybrid learning	A blend of online and in-person instruction (online instruction is synchronous or asynchronous).
Hyflex learning	Students can move between online and in-person instruction as they see fit (also referred to as multi-access or co-modal learning).
In-person learning	All instruction takes place in an in-person setting.
Synchronous learning	Instruction takes place in real-time and requires student presence (in-person or virtual) at a set time.
Asynchronous learning	Instruction is available for students to access at a time that works best for them.



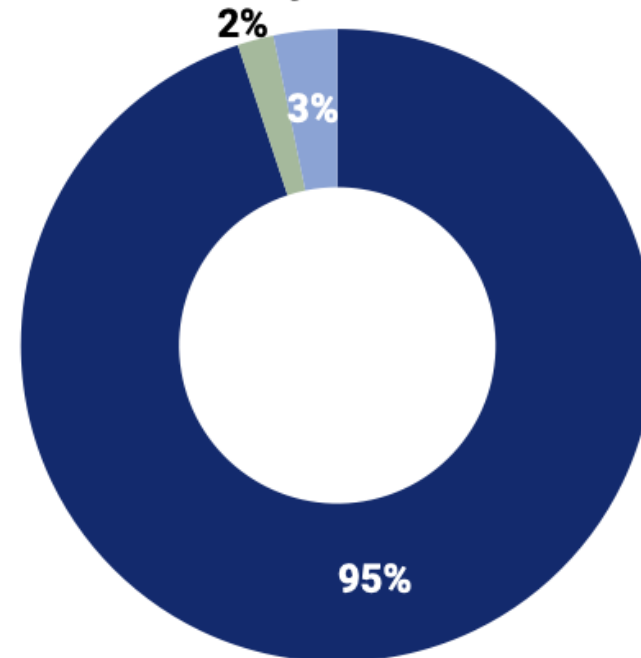
# High Levels of Agreement

**ONLINE Learning means all instruction and interaction is fully online (synchronous or asynchronous)**



- Agree
- Neutral
- Disagree

**HYBRID Learning means a blend of online and in-person instruction (online instruction is synchronous or asynchronous)**



- Agree
- Neutral
- Disagree



# Key Findings

- There was widespread agreement with the survey definitions.
- At the institutional level, there is a lot of variation in describing course offerings.
- The findings highlight a need for a "big bucket" approach for categorizing the variety of course offerings that exist.



# Modes of Learning Spectrum (2022)

## Distance Learning (Remote Learning)

### Offline Distance Learning

All instruction is done by correspondence that does not use Internet technologies  
(e.g, print resources sent by mail)

### Online Learning

All classes and/or instructional activities happen online; there is no on-campus requirement  
(synchronous, asynchronous, or a mix of synchronous/asynchronous)

SYNCHRONOUS ONLINE

COMBINED SYNCHRONOUS/ASYNCHRONOUS

ASYNCHRONOUS ONLINE

SELF-PACED ASYNCHRONOUS

EMERGENCY REMOTE LEARNING

MULTI-ACCESS ONLINE

### Hybrid Learning (Blended Learning)

Any mix of online and in-person instruction; online elements may be synchronous or asynchronous)  
(structure of online/in-person mix may follow an instructor prescribed or student-choice model)

FLIPPED CLASSROOM

CO-MODAL LEARNING

MULTI-ACCESS HYBRID

HYFLEX LEARNING

ONLINE INSTRUCTION WITH IN-PERSON PRACTICUM OR INTENSIVE

---

## In-Person Learning (Face-to-Face Learning, On-Campus Learning)

### In-Person Technology-Supported Learning

All classes take place on campus  
(technology is used in teaching and learning; use of digital resources)  
A variety of technologies are used to support the learning experience that may include: LMS,  
office hours by video conference, OER, online homework, online student interaction,  
recorded lectures, and/or technology use during classroom sessions

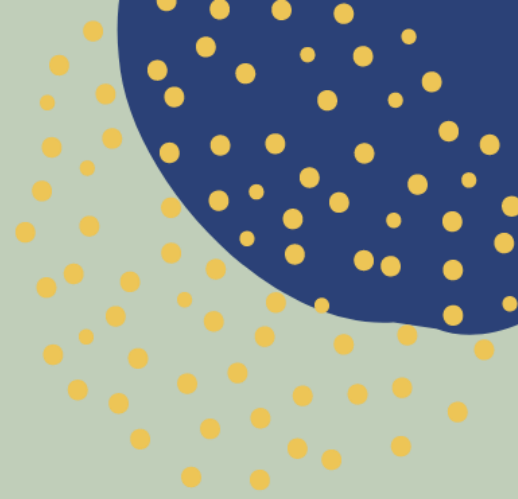
### In-Person Non-Digital Learning

All classes take place on campus  
(no technology or digital resources are required to complete coursework)





# Questions from the Audience

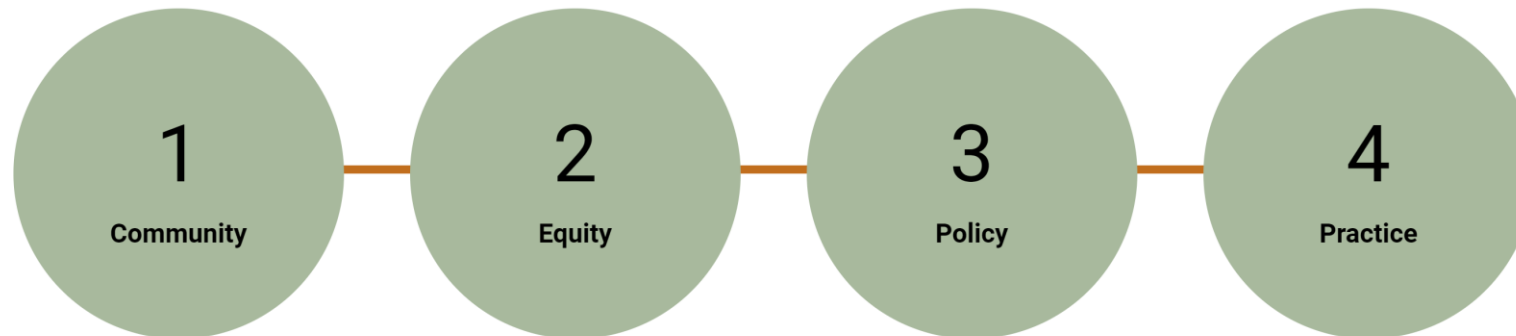


# Learn more and stay connected:

Visit [wcet.wiche.edu](https://wcet.wiche.edu) to explore our Policy and Practice work, Events, Membership, and Sponsorship.

Learn more about the benefits of joining our community: [wcet.wiche.edu/join-us](https://wcet.wiche.edu/join-us)

WCET is the leader in the practice, policy, & advocacy of digital learning in higher education.



# Additional Information and Resources

The webcast recording and additional resources will be available in the next week:

[wcet.wiche.edu/events/webcasts](http://wcet.wiche.edu/events/webcasts).



wcet

Webcast





Join us at the WCET  
Annual Meeting!

Learn more and register:

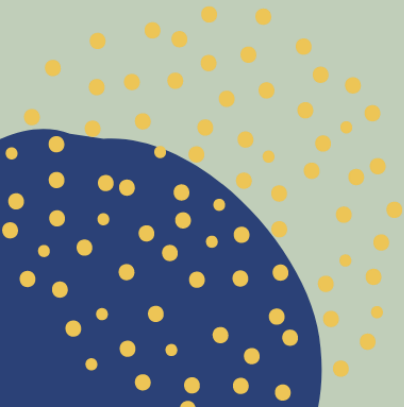
[cvent.me/YdK2ME](https://cvent.me/YdK2ME)




















# Thank you WCET Annual Sponsors

Learn more:

[wcet.wiche.edu/sponsorship/wcet-sponsors](http://wcet.wiche.edu/sponsorship/wcet-sponsors)

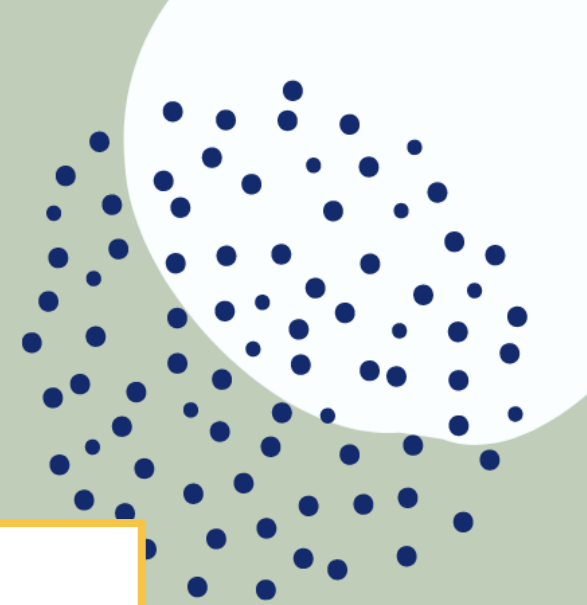


<hr/>  anthology	 Champion Sponsor	<hr/> <b>D2L</b> LearningMate™
<hr/>  BibliU	 Leader Sponsor	<hr/>  turnitin™
<hr/>  QUOTTLY	 Friend Sponsor	<hr/> <b>WILEY</b> University Services <hr/> <b>ENGEN</b>
<hr/>  straighterline™		
<hr/>  coursera for campus		
<hr/>  Harmonize	 Supporter Sponsor	<hr/> 
<hr/>  GUILD		
<hr/>  iDesign	 In-Kind Sponsors	<hr/>



Thank you Supporting Members for  
your commitment to WCET and digital  
learning.

The California State University  
Colorado State University  
Michigan State University  
The University of Arizona  
University of Florida



*Thank you!*  
*wcet.wiche.edu*

