



Community

Equity

Policy

Practice

[wcet.wiche.edu](http://wcet.wiche.edu)

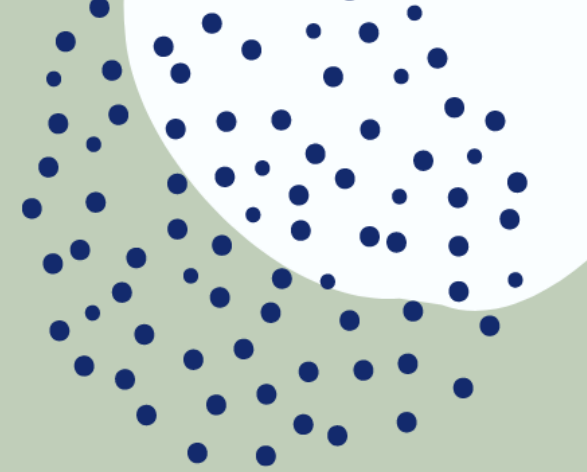
# Welcome to today's #WCETWebcast

**July 27, 2022**

The webcast will begin shortly.

There is no audio being broadcast at this time.

An archive of this webcast will be available on the WCET website next week.



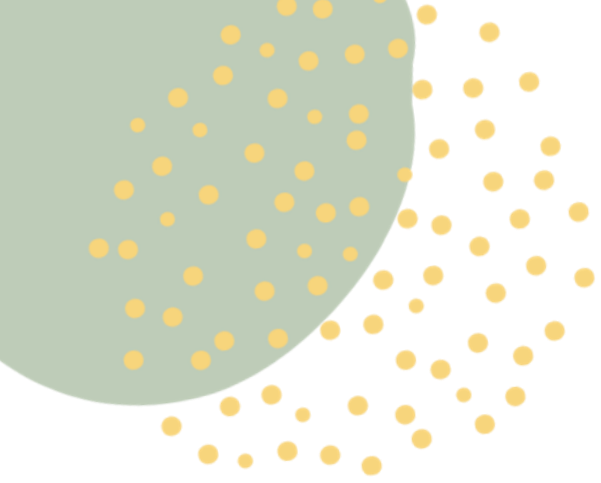


wcet

Webcast

# Responding to Student Demand with Agile Teaching and Learning Strategies

July 27, 2022



*Use the question box for questions and information exchange.*

*Slides and shared resources will be emailed to attendees next week.*

*Slides can be downloaded via the link in chat.*

*Follow the Twitter feed: #WCETWebcast.*

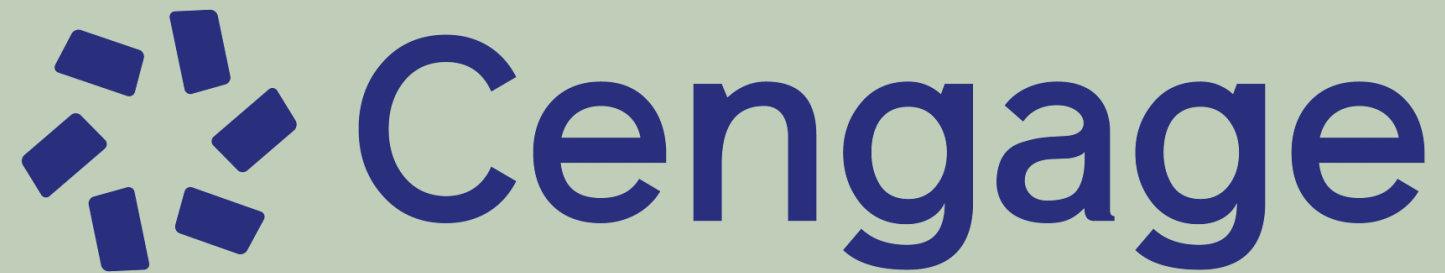
# Welcome!



Megan Raymond  
Senior Director, Membership & Programs  
WCET  
[mraymond@wiche.edu](mailto:mraymond@wiche.edu)  
[@meraymond](https://twitter.com/meraymond)

Hosted in partnership with:

---





# Questions from the Audience

*If you have a question during the presentation, please add it to the question box.*

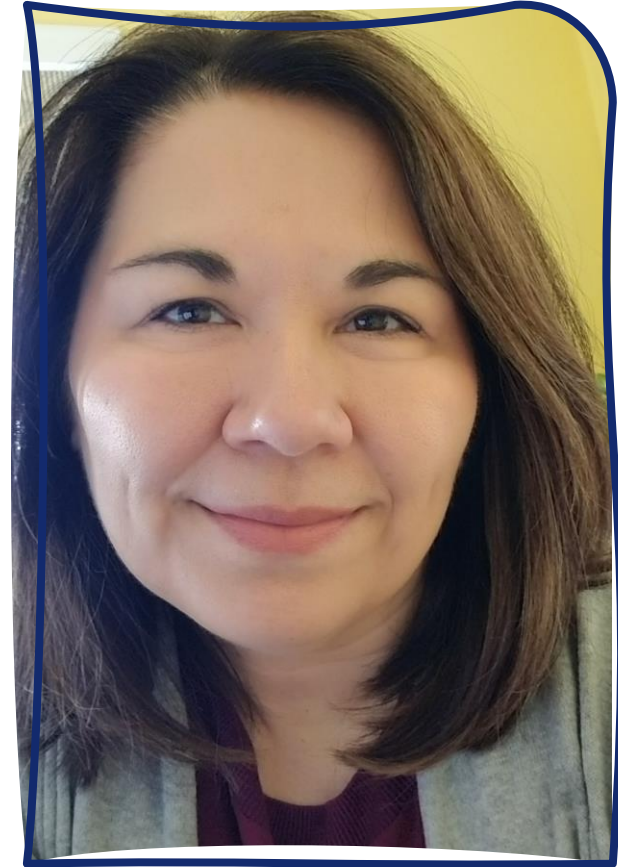
*We will monitor the question box and have time for Q&A at the end of the webcast.*

# Moderator

**Natalie Skadra**

Executive Director, Learning and  
Accessibility

Cengage



# Speakers



**Jacinth Coultman**

Vice President of Academic  
Technology

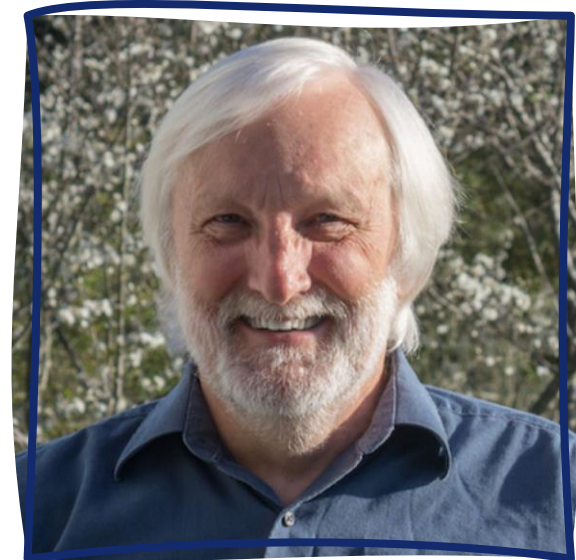
Monroe College



**Justin Dammeier**

Executive Director of  
Education Technology

Ivy Tech Community College



**Jeff Seaman**

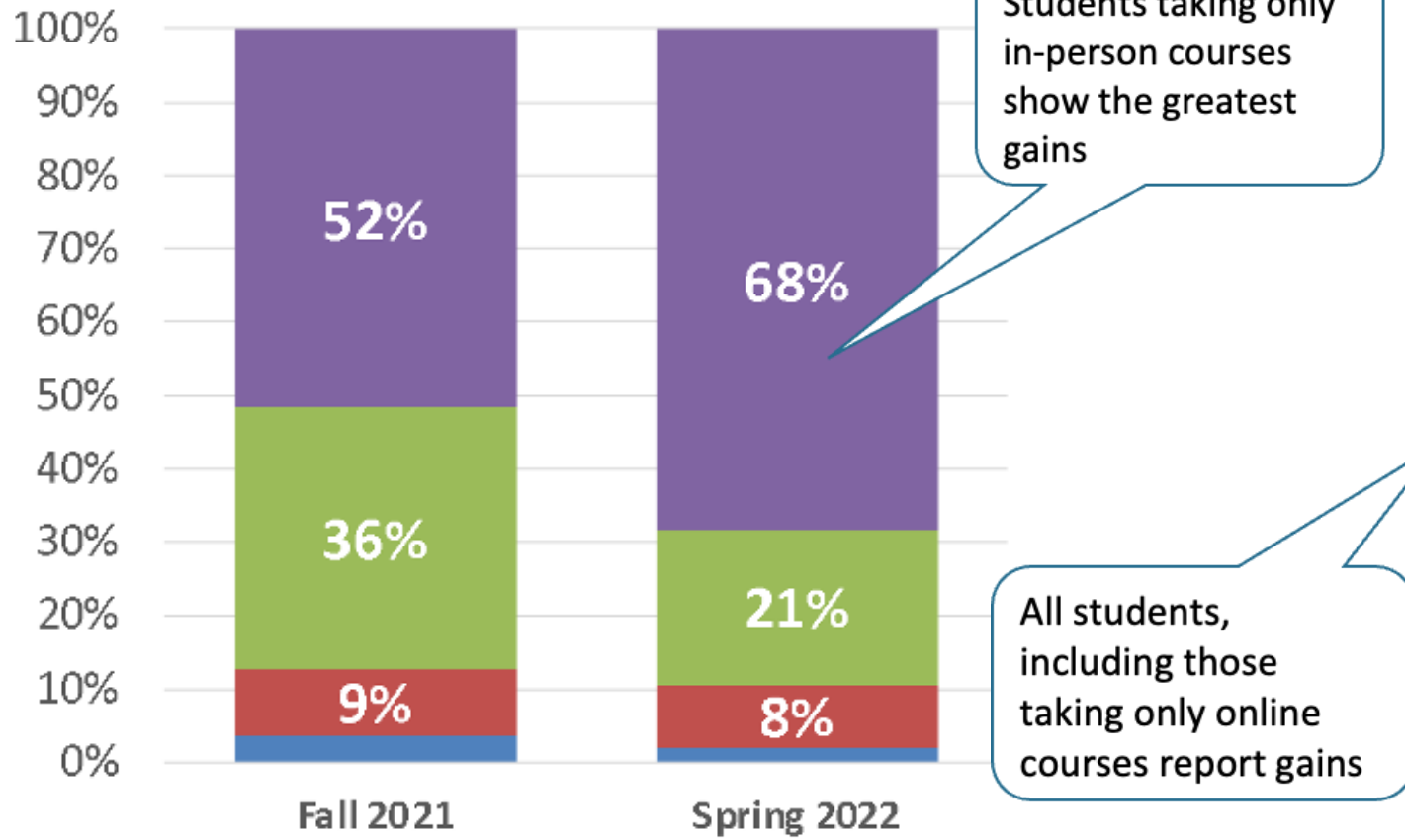
Director

Bay View Analytics

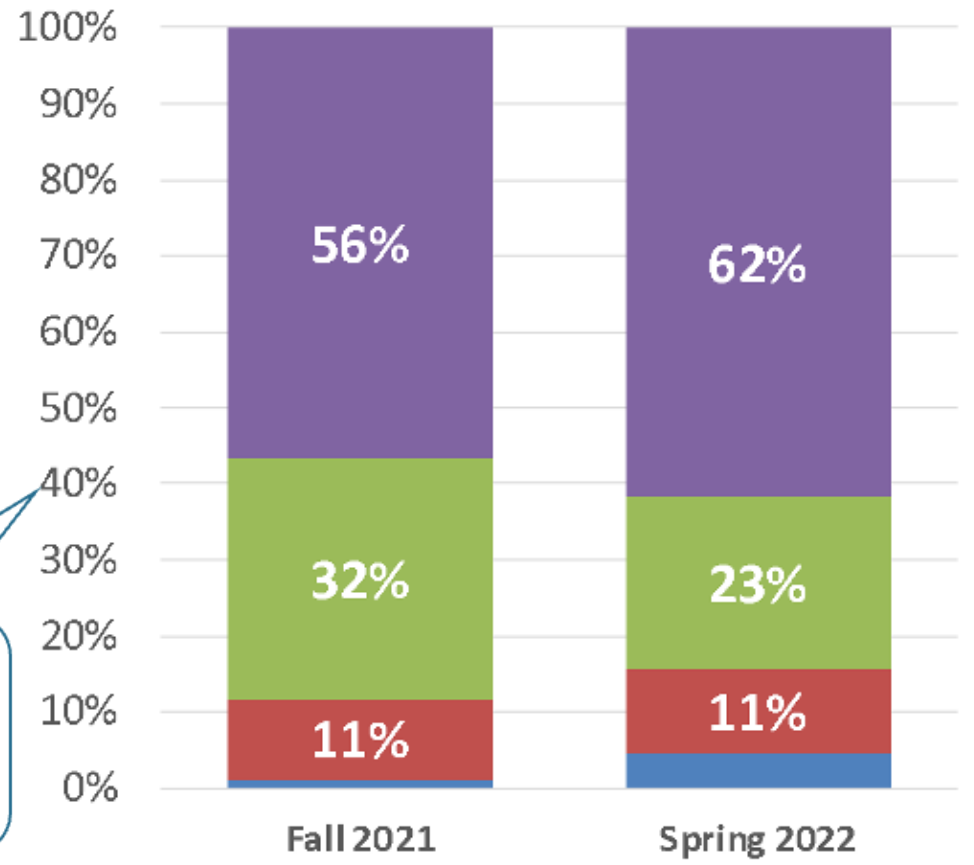


# How Well Courses Meet My Educational Needs

## Students taking only in-person courses



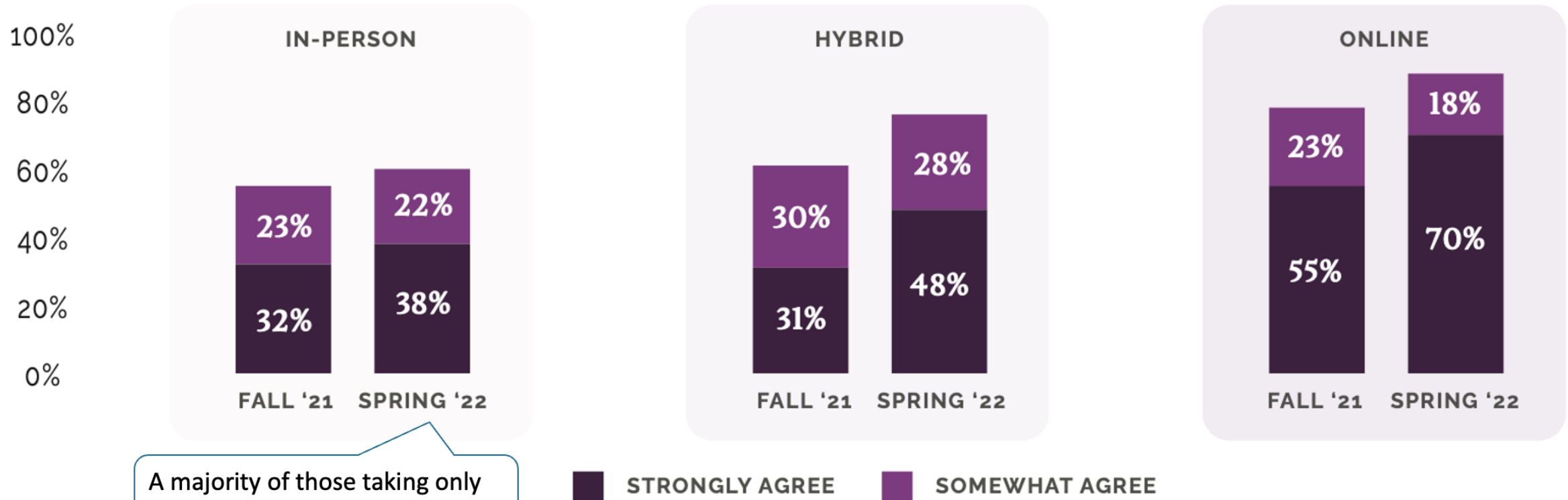
## Students taking only online courses



■ Fail ■ C ■ B ■ A

# Desire for Online Courses Is Pervasive

Students: The option to take some of my courses in a fully-online format by current instruction mode

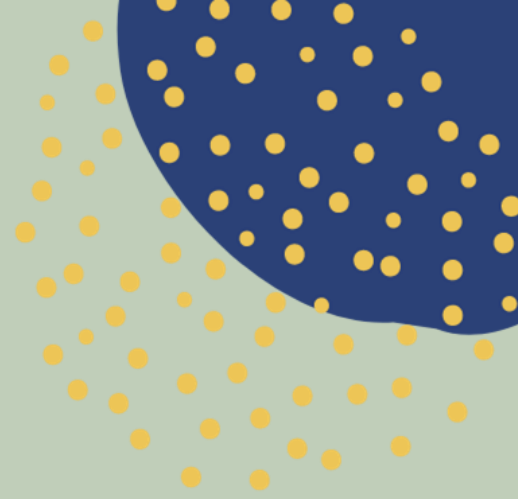


A majority of those taking only in-person classes desire online

■ STRONGLY AGREE ■ SOMEWHAT AGREE



# Questions from the Audience



# Contact Information



Jacinth Coultman

[jcoultman@monroecollege.edu](mailto:jcoultman@monroecollege.edu)

[LinkedIn](#)



Justin Dammeier

[jdammeier@ivytech.edu](mailto:jdammeier@ivytech.edu)

[LinkedIn](#)



Jeff Seaman

[jeff@bayviewanalytics.com](mailto:jeff@bayviewanalytics.com)



Natalie Skadra

[@NSkadra](#)

# Resources

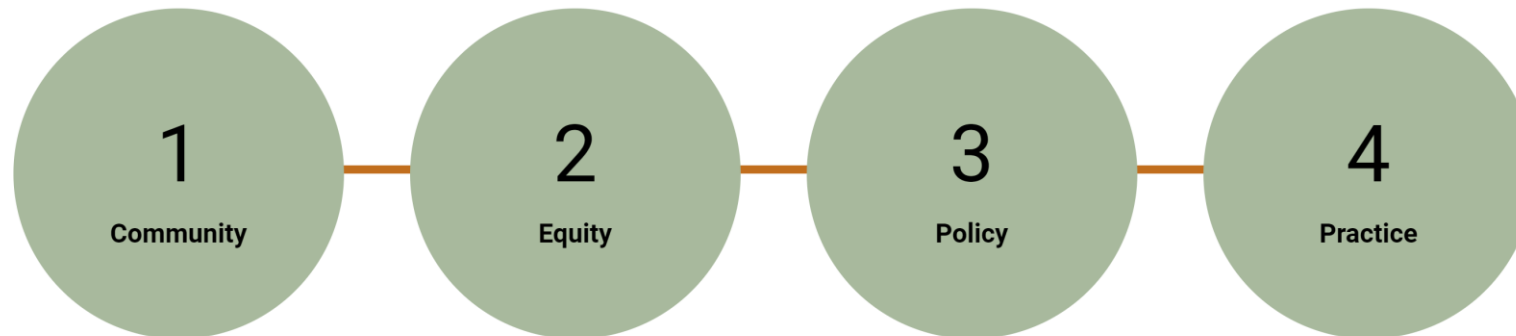
- <https://info.cengage.com/LP=5443> (infographic, survey results)
- <https://www.bayviewanalytics.com/>
- <https://www.ivytech.edu>
- <https://www.monroecollege.edu/>

# Learn more and stay connected:

Visit [wcet.wiche.edu](https://wcet.wiche.edu) to explore our Policy and Practice work, Events, Membership, and Sponsorship.

Learn more about the benefits of joining our community: [wcet.wiche.edu/join-us](https://wcet.wiche.edu/join-us)

WCET is the leader in the practice, policy, & advocacy of digital learning in higher education.



# Additional Information and Resources

The webcast recording and additional resources will be available in the next week:

[wcet.wiche.edu/events/webcasts](http://wcet.wiche.edu/events/webcasts).

To access the most recent infographics from the Digital Learning Pulse Survey Series, visit

[info.cengage.com/LP=5443](http://info.cengage.com/LP=5443).



# Join us at the WCET Annual Meeting!

Learn more and register:

[bit.ly/WCETAM2022](https://bit.ly/WCETAM2022)

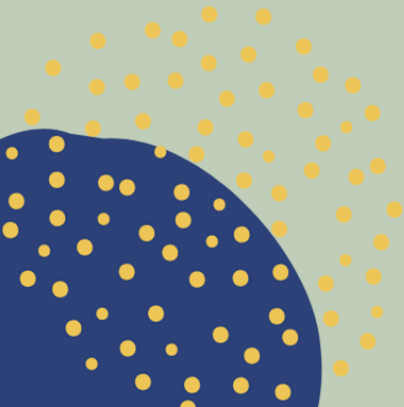




# Thank you WCET Annual Sponsors

Learn more:

[wcet.wiche.edu/sponsorship/wcet-sponsors](http://wcet.wiche.edu/sponsorship/wcet-sponsors)



---

Blackboard  
LearningMate™



---

BibliU



---

Emsi | burning glass



ENGEN



Harmonize



GUILD



---

D2L

---

turnitin™

WILEY University Services

---

Labster

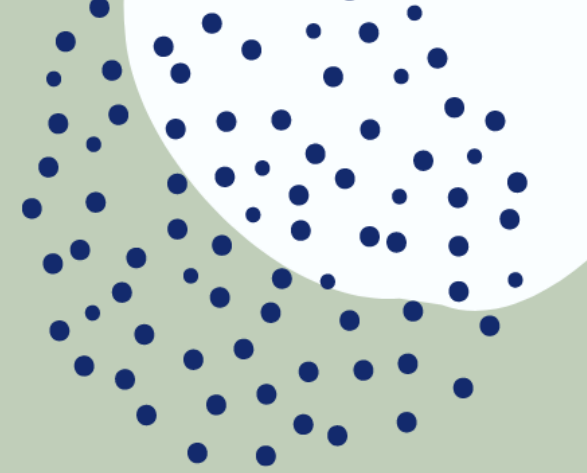
QUOTTLY

straighterline™

---

iDesign

Thank you Supporting Members for  
your commitment to WCET and digital  
learning.

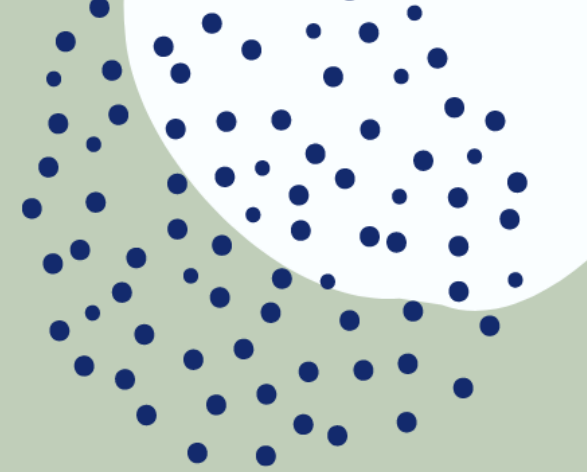


California State University,  
Office of the Chancellor

Colorado State University

Michigan State University

University of Florida



*Thank you!*  
*[wcet.wiche.edu](http://wcet.wiche.edu)*