



Community

Equity

Policy

Practice

[wcet.wiche.edu](http://wcet.wiche.edu)

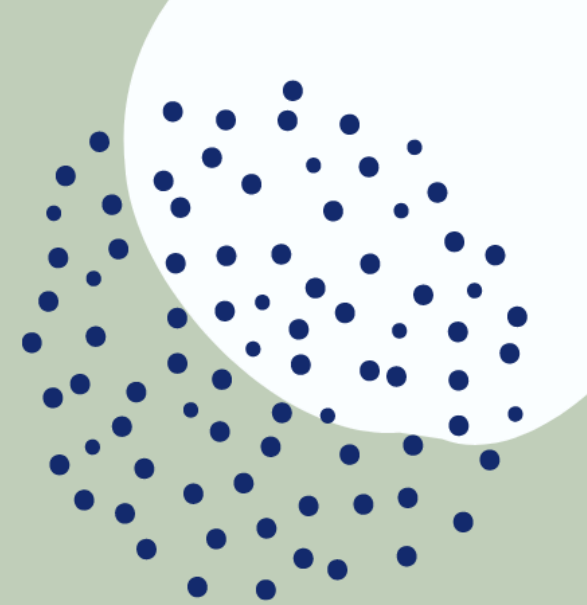
# Welcome to today's #WCETWebcast

**JANUARY 20, 2022**

The webcast will begin shortly.

There is no audio being broadcast at this time.

An archive of this webcast will be available on the WCET website next week.

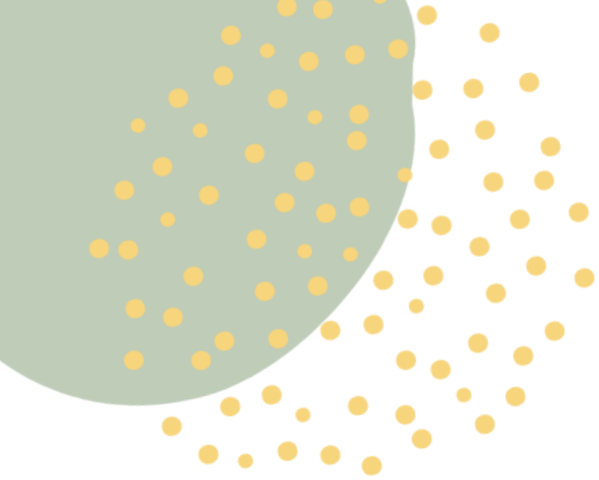




# Reflections on 2021 and Aspirations for 2022 from Digital Learning Leaders and Learners

January 20, 2022





*Use the question box for questions and information exchange.*

*Slides and shared resources will be emailed to attendees next week.*

*Slides can be downloaded via the link in chat.*

*Follow the Twitter feed: #WCETWebcast.*

# Welcome!



Megan Raymond  
Senior Director, Membership & Programs

WCET

[mraymond@wiche.edu](mailto:mraymond@wiche.edu)

[@meraymond](https://twitter.com/meraymond)





# Questions from the Audience

*If you have a question during  
the presentation, please add it  
to the question box.*

*We will monitor the question  
box and have time for Q&A at  
the end of the webcast.*



# Moderator

**Carrie O'Donnell**

Founder & CEO

O'Donnell Learn



# Speakers



**John Holdcroft**, Associate Vice President, Business Development, BibliU

**Jennifer Seymour**, Vice President, General Education & Applied Technologies, WSU Tech

**Kelvin Thompson**, Executive Director, Center for Distributed Learning, University of Central Florida

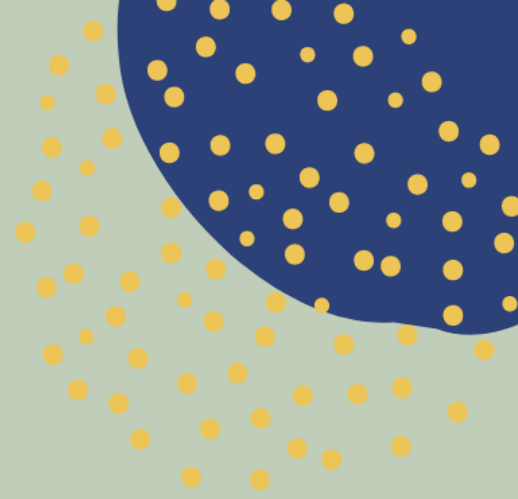
**Jessica Rowland Williams**, Director, Every Learner Everywhere

**Kiara Williams**, Education Outreach Coordinator, 3D Girls, Inc. and Student Ambassador, Every Learner Everywhere





# Questions from the Audience





# Contact Information



John Holdcroft  
[@johnholdsea](https://twitter.com/johnholdsea)



Carrie O'Donnell  
[@Carrieodonfire](https://twitter.com/Carrieodonfire)



Jennifer Seymour  
[@Jenn\\_SeymourEdD](https://twitter.com/Jenn_SeymourEdD)



Kelvin Thompson  
[@kthompso](https://twitter.com/kthompso)



Jessica Rowland Williams  
[@DrJessWilliams](https://twitter.com/DrJessWilliams)



Kiara Williams  
[LinkedIn](https://www.linkedin.com/in/kiarawilliams/)

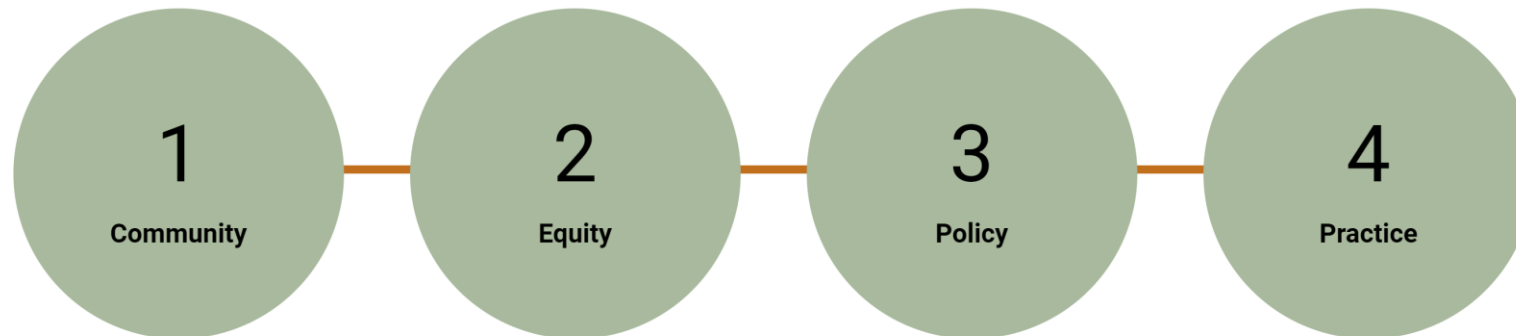


# Learn more and stay connected:

Visit [wcet.wiche.edu](https://wcet.wiche.edu) to explore our Policy and Practice work, Events, Membership, and Sponsorship.

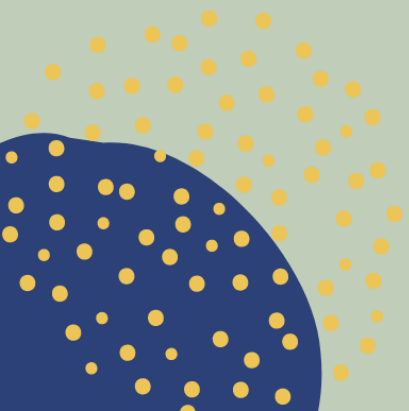
Learn more about the benefits of joining our community: [wcet.wiche.edu/join-us](https://wcet.wiche.edu/join-us)

WCET is the leader in the practice, policy, & advocacy of digital learning in higher education.



# Additional Information and Resources

The webcast recording and any additional resources will be available in the next week:  
[wcet.wiche.edu/events/webcasts](http://wcet.wiche.edu/events/webcasts).



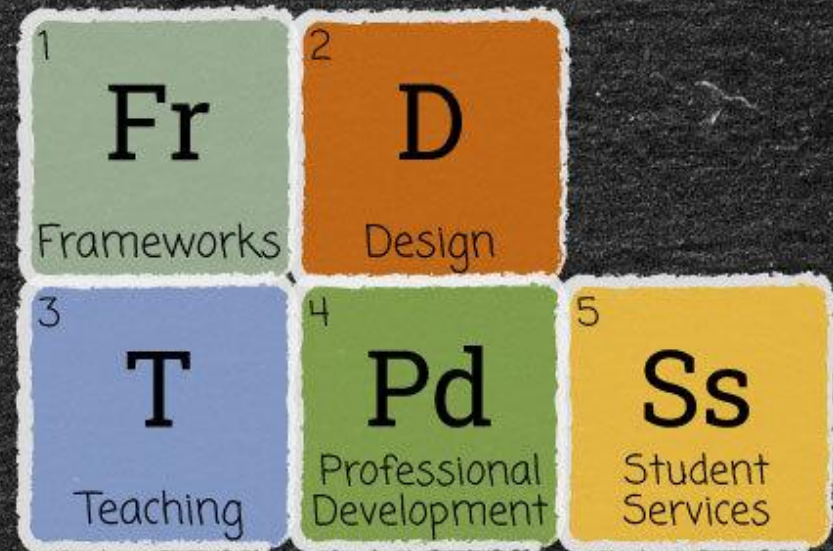
Join us: [bit.ly/wcet-summit-2022](https://bit.ly/wcet-summit-2022)

# Elements of Quality Digital Learning

WCET Virtual Summit

Exclusively for WCET Members

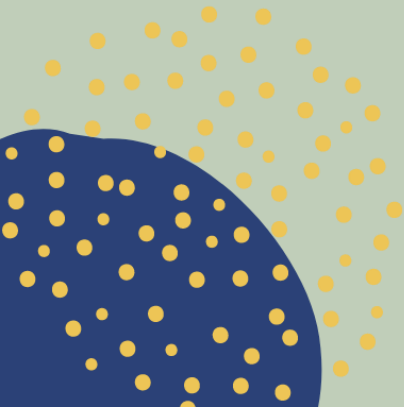
April 6, 2022














# Thank you WCET Annual Sponsors

Learn more:

[wcet.wiche.edu/sponsorship/wcet-sponsors](http://wcet.wiche.edu/sponsorship/wcet-sponsors)

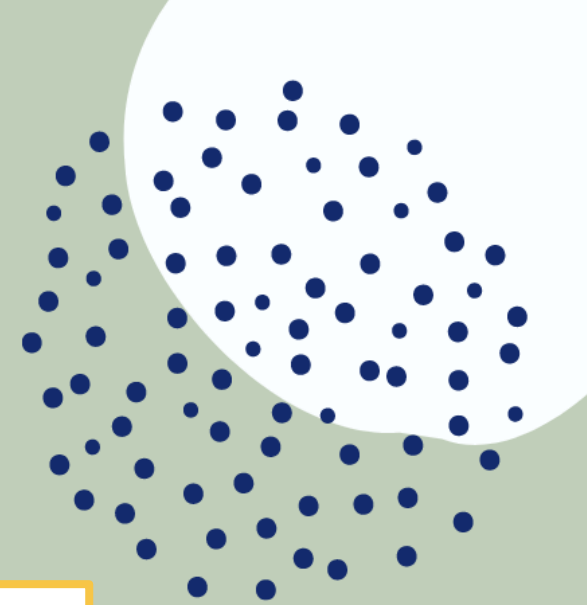


<hr/> <b>Blackboard</b> 	 <b>WILEY</b> EDUCATION SERVICES	<hr/> <b>LearningMate</b> <sup>TM</sup> <b>D2L</b> <sup>TM</sup>
<hr/> 	 <b>Labster</b> 	<hr/>   Pistis.io
<hr/>  <b>GUILD</b>	 	<hr/> 



Thank you Supporting Members for  
your commitment to WCET and digital  
learning.

Colorado State University  
Michigan State University  
University of Florida



*Thank you!*  
*wcet.wiche.edu*

