

The slide features a dark blue background on the left side, decorated with various geometric shapes: a large solid circle, a dashed circle, a square outline, a dashed line, and a triangle outline. A large white semi-circle on the right side contains the text.

WCET Webcast

wcet.wiche.edu



wcet

Webcast

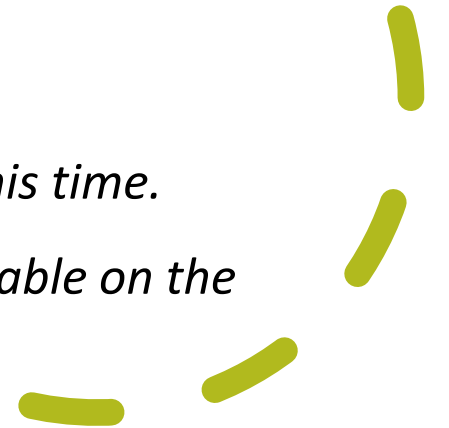
Welcome to today's
#WCETWebcast

August 25

The webcast will begin shortly.

There is no audio being broadcast at this time.

*An archive of this webcast will be available on the
WCET website next week.*





Preparing for Fall: How Higher Education Administrators Are Planning for a New Normal

August 25, 2021



Welcome!

Use the question box for questions and information exchange.

Slides and shared resources will be emailed to attendees next week.

Slides can be downloaded via the link in chat.

Follow the Twitter feed: #WCETWebcast.



Megan Raymond
Senior Director, Programs & Membership
WCET
mraymond@wiche.edu
[@meraymond](https://twitter.com/meraymond)

Hosted in partnership with:



Questions from the Audience



If you have a question during the presentation, please add it to the question box.

We will monitor the question box and have time for Q&A at the end of the webcast.

Moderator

Jeff Borden

Chief Academic Officer

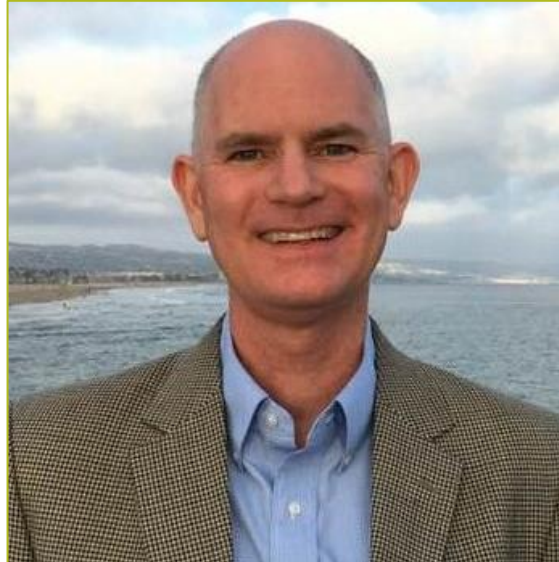
D2L



Speakers



Mordecai Ian Brownlee
President
Community College of Aurora



Tom Cavanagh
Vice Provost for Digital Learning
University of Central Florida



Pat James
@ONE Course Facilitator
California Community Colleges
Virtual Campus & Online
Education Initiative

Resources

- Administrator Plans
 - [“A Trauma-Informed Return to Campus”](#), Adam Jussel, University of Wisconsin, in *The Chronicle of Higher Education*, Sarah Brown, July 27, 2021.
 - [Trauma-Informed Tool Kit](#). The University of Wisconsin, Milwaukee.
- Planning
 - [Online Teaching Conference, June 2020. Keynote.](#)
 - [Google site: Resources for OTC Re: Planning.](#)
- Changing Normal Engaging Students
 - Glossary of Education Reform: [Great Schools Partnership.](#)
 - [Thoughts about Rigor.](#)
 - [Mihaly Csikszentmihalyi & Flow.](#)

“This is everyone's first pandemic; this is everyone's mass trauma event. We all have to **work together** with grace and grit, confidence and humility, and **most of all LOVE.**”





Questions from the Audience





Contact Information



Jeff Borden
[@bordenj](#)



Mordecai Brownlee
[@ItsDrMordecai](#)



Tom Cavanagh
[@tbcavanagh](#)



Pat James
[@PatJamesHanz](#)

Learn more and stay connected:

Visit wcet.wiche.edu to explore our Focus Areas, Initiatives, Events, Membership, and Sponsorship.

Learn more about the benefits of joining our community:
wcet.wiche.edu/join-wcet

Focus Areas ▼

Initiatives ▼

Events ▼

Get Involved ▼

Additional Information and Resources

The webcast recording and additional resources will be available next week:
wcet.wiche.edu/events/webcasts.



Champion
Sponsor

Blackboard

WILEY
EDUCATION SERVICES

CENGAGE

D2L
DESIRE2LEARN

LearningMate™

Leader
Sponsor

BibliU

soomo

Friend
Sponsor

straighterline.

Pistis.io

QUOTTLY

Supporter
Sponsor

iDesign

MINDWIRES

GUILD



Thank you WCET Annual Sponsors

Learn more:

[wcet.wiche.edu/get-
involved/sponsorship/sponsors](http://wcet.wiche.edu/get-involved/sponsorship/sponsors)



Thank you **Supporting Members** for your
commitment to WCET and digital learning

Colorado State University

Michigan State University

University of Florida



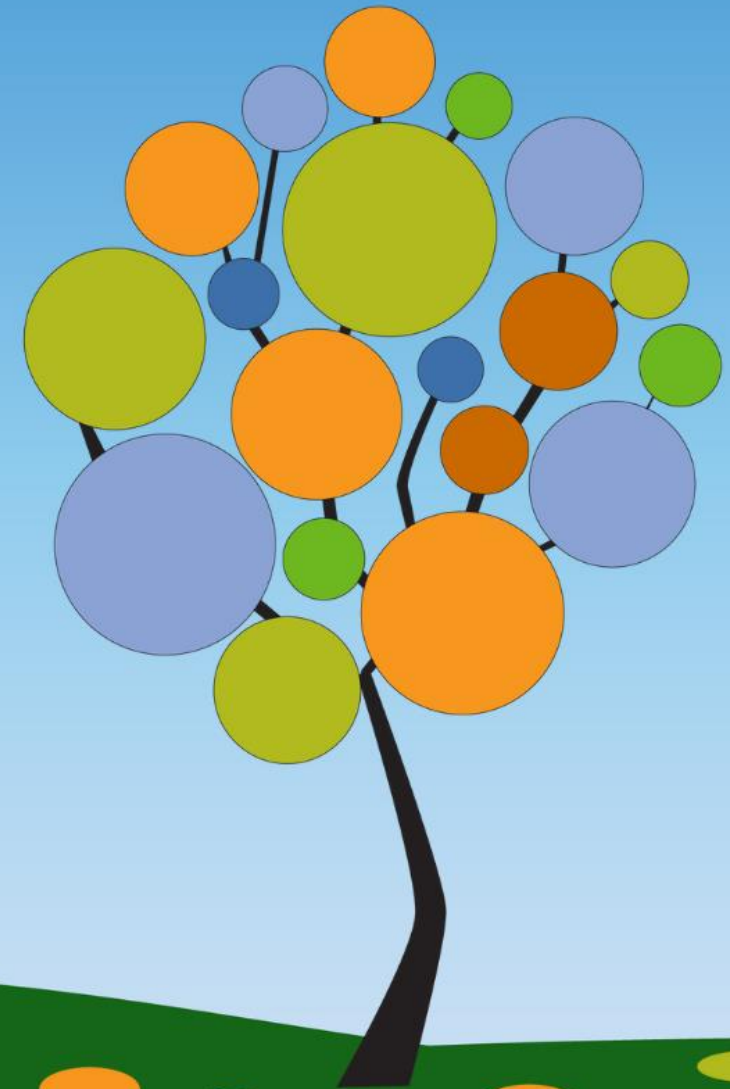
WCET 33rd Annual Meeting

November 2, 2021

20% off new registrations*

Sale ends September 10, 2021

Back to School Sale
WCETpromo20



**New registrations only. For group registrations, the discount applies to the primary registrant.*

<https://wcet.wiche.edu/events/annual-meeting>



Thank you!

wcet.wiche.edu