



Welcome to #WCETWebcast

January 19, 2017

- *The webcast will begin shortly.*
- *There is no audio being broadcast at this time.*
- *An archive of this webcast will be available on the WCET website next week.*

Issues and Trends in Edtech in 2017

January 19



Welcome!

- *Use the question box for questions and information exchange.*
- *Archive, PowerPoint, and Resources available next week.*
- *PowerPoint can be downloaded in the handouts pane.*
- *Follow the Twitter feed: #WCETwebcast.*



Megan Raymond
Assistant Director, Programs
& Sponsorship
WCET

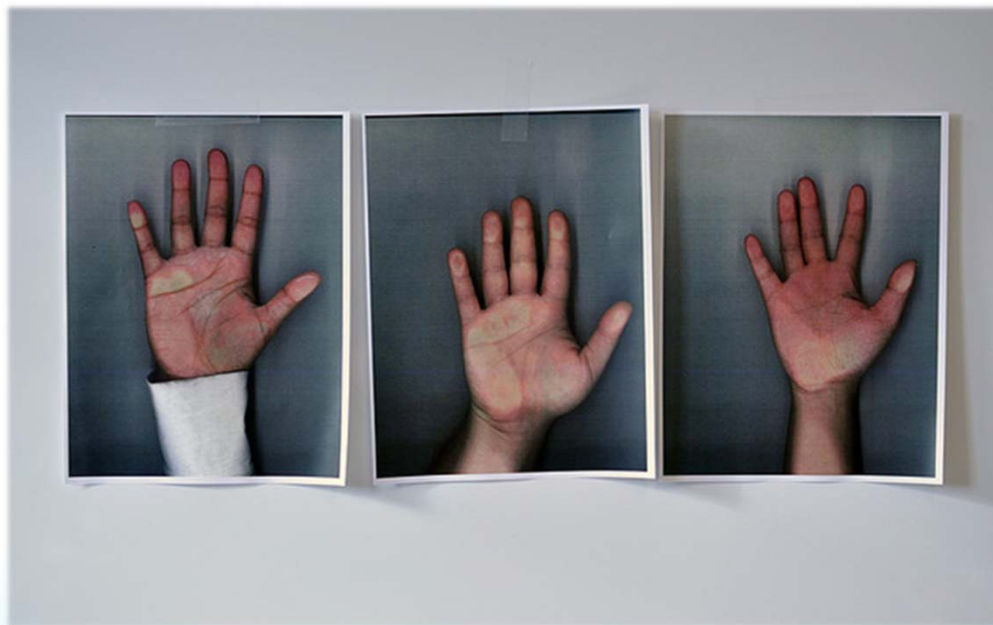
mraymond@wiche.edu
@meraymond

Overview



Questions from the Audience

- *If you have a question during the presentation, please add your questions to the question box.*
- *We will monitor the question box and have time for Q&A during the last part of the conversation.*



Moderator

Megan Raymond

- *Assistant Director, Programs and Sponsorship*
- *WCET*
- @meraymond



Presenters

Amy Collier

- Associate Provost for Digital Learning,
Middlebury College



[@amcollier](https://twitter.com/amcollier)

Luke Dowden

- Director, Office of Distance Learning
 - *University of Louisiana at Lafayette*



[@lukedowden](https://twitter.com/lukedowden)

Phil Hill

- Partner
 - *MindWires Consulting*



[@PhilOnEdTech](https://twitter.com/PhilOnEdTech)

Manoj Kulkarni

- Chief Executive Officer
 - *Realizelt*



[@1manojkulkarni](https://twitter.com/1manojkulkarni)



Moderated Conversation

@meraymond

Amy Collier

*Middlebury
College*



[@amcollier](#)

**Luke
Dowden**

*University of
Louisiana at
Lafayette*



[@lukedowden](#)

Phil Hill

*MindWires
Consulting*



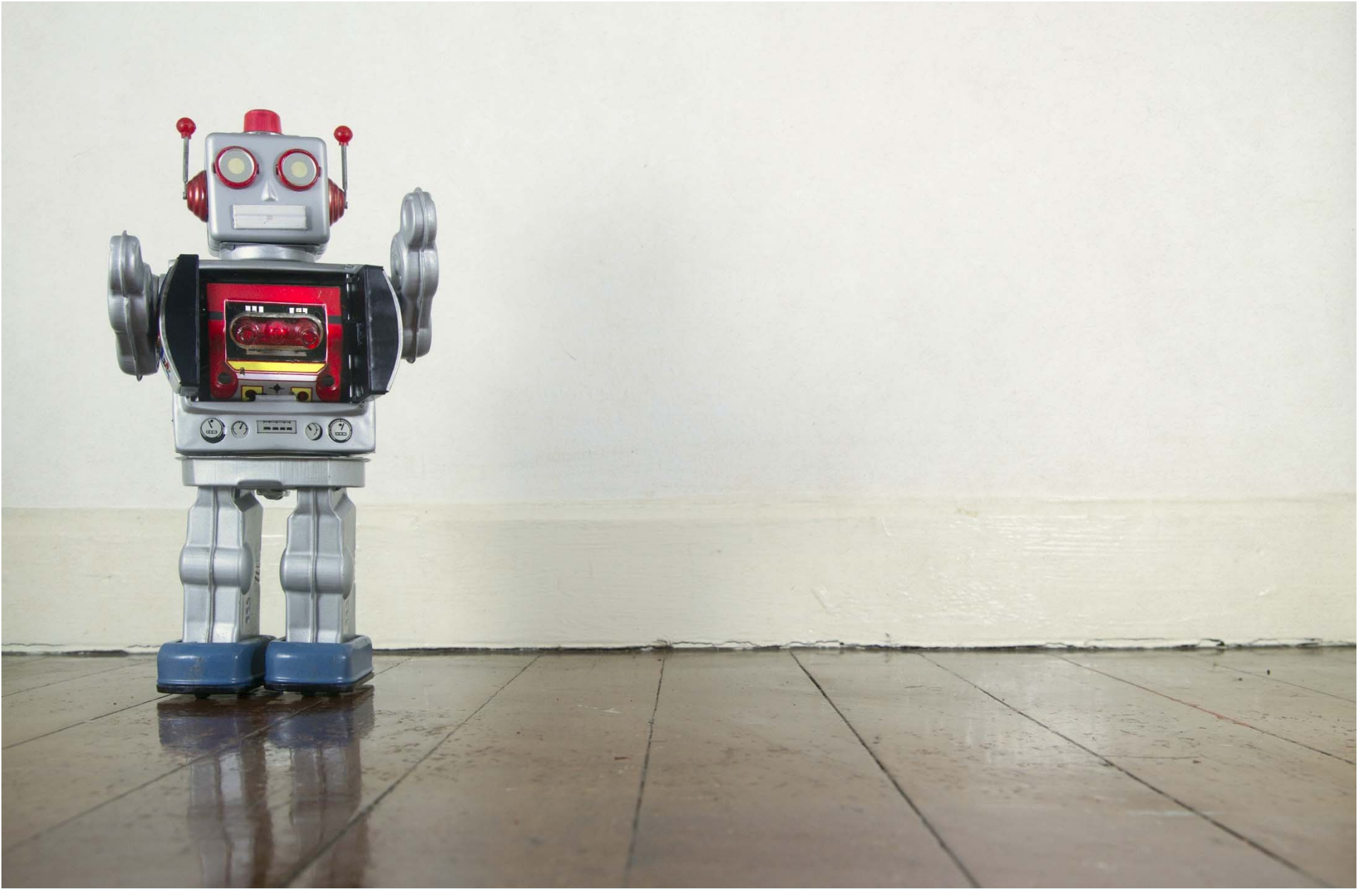
[@PhilOnEdTech](#)

**Manoj
Kulkarni**

Realizelt



[@1manojkulkarni](#)





Moderated Conversation

@meraymond

Amy Collier

*Middlebury
College*



[@amcollier](#)

**Luke
Dowden**

*University of
Louisiana at
Lafayette*



[@lukedowden](#)

Phil Hill

*MindWires
Consulting*



[@PhilOnEdTech](#)

**Manoj
Kulkarni**

Realizelt



[@1manojkulkarni](#)





Moderated Conversation

@meraymond

Amy Collier

*Middlebury
College*



[@amcollier](#)

**Luke
Dowden**

*University of
Louisiana at
Lafayette*



[@lukedowden](#)

Phil Hill

*MindWires
Consulting*



[@PhilOnEdTech](#)

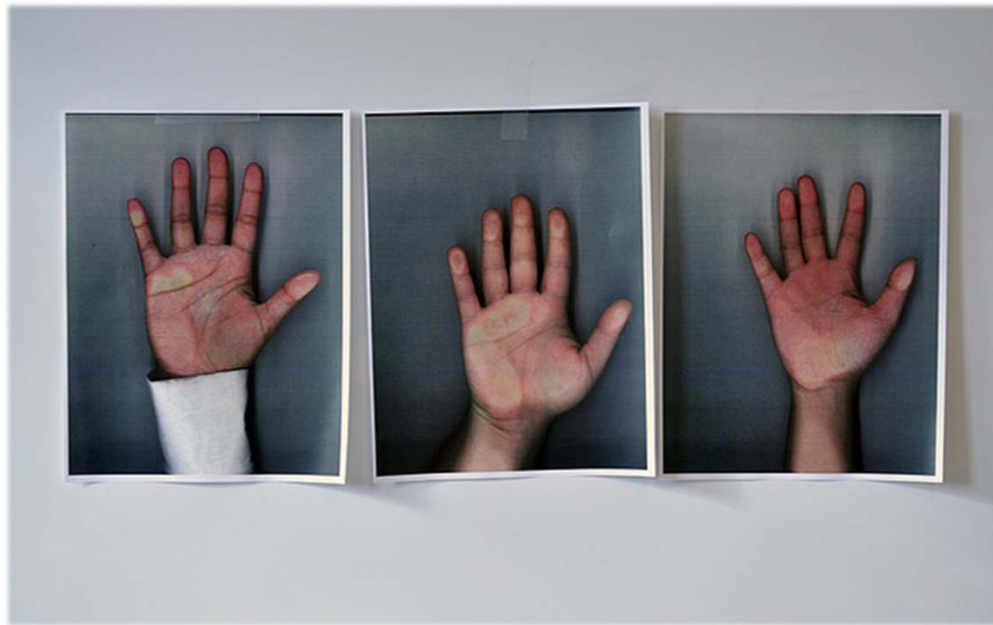
**Manoj
Kulkarni**

Realizelt



[@1manojkulkarni](#)

Questions from the Audience



Contact Information

Amy Collier | @amcollier | acollier@middlebury.edu

Luke Dowden | @lukedowden | Luke.Dowden@Louisiana.edu

Phil Hill | @philonedtech | phil@mindwires.com

Manoj Kulkarni | @1manojkulkarni | manoj.Kulkarni@realizeitlearning.com

Megan Raymond | @meraymond | mraymond@wiche.edu

Additional Information and Resources

Access to the resources discussed during this webcast, including the archive, will be available next week.

<http://wcet.wiche.edu/connect/webcasts>



Learn More and Stay Connected

Focus Areas ▼

Initiatives ▼

Events ▼

Get Involved ▼

Visit WCET's Website to learn about our Focus Areas, Initiatives, Events, Membership, and Sponsorship: <http://wcet.wiche.edu/>

Join WCET: learn more about the benefits of joining our community: <http://wcet.wiche.edu/join-wcet>

Learn More and Stay Connected

WCET Leadership Summit: Building and Expanding Capacity for Leading Innovation



June 14-15

Salt Lake City, UT

WCET Annual Meeting

October 25-27

Denver, CO

Next #WCETwebcast

Join us February 16 for our next webcast: **Understanding & Implementing a Content Strategy**. Stay tuned for more details.



Thank you Supporting Members for your commitment to WCET and e-Learning

- *Colorado State University*
- *Cooley LLP*
- *Lone Star College System*
- *Michigan State University*
- *University of Missouri - Columbia/Mizzou Online*
- *University of North Texas*

Thank you WCET Annual Sponsors

- *Blackboard*
- *MaxKnowledge*
- *Realizeit*
- *Wiley Education Services*
- *Civitas*
- *Ed Map*
- *Carolina Distance Learning*
- *Ilos videos*
- *Pearson Learning Solutions*
- *Soomo Learning*
- *Straighterline*
- *RankU*
- *Schoology*
- *Smart Sparrow*
- *MediaSite*

Learn about Sponsorship Opportunities: <http://wcet.wiche.edu/get-involved/sponsorship>