

Welcome to #WCETWebcast

February 21, 2019

The webcast will begin shortly.

There is no audio being broadcast at this time.

An archive of this webcast will be available on the WCET website next week.



WCET WEBCAST
FEBRUARY 21

A Student Response to Analytics, Privacy, and Security

Welcome!

Use the question box for questions and information exchange.

Archive, PowerPoint, and Resources available will be next week.

*Follow the Twitter feed:
#WCETWebcast.*



Megan Raymond
Director, Programs & Sponsorship
WCET
mraymond@wiche.edu
@meraymond



Overview

01

Introductions

02

Overview of data analytics in higher ed.

03

Moderated conversation around data, privacy, and security of information.

04

What students want you to consider when using their data.

05

Audience Q&A

06

Conclusion



Questions from the Audience

If you have a question during the presentation, please add your questions to the question box.

We will monitor the question box and have time for Q&A at the end of each section.



Moderator

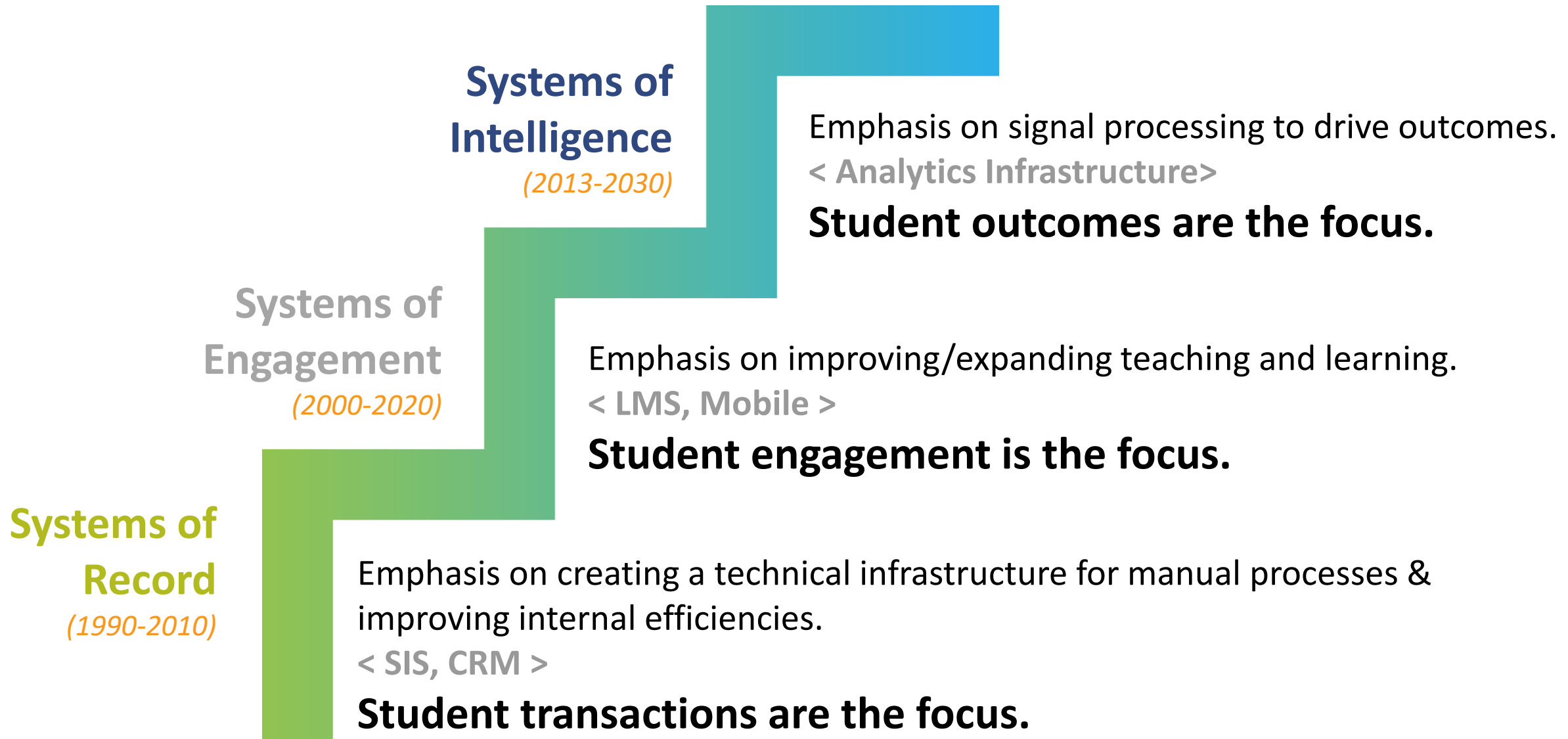
Rob Robinson

Senior Principal Partner Strategy Consultant

Civitas Learning



THE EVOLUTION OF STUDENT SUCCESS SYSTEMS



Presenters



Linda Baer
Senior Consultant
Linda L. Baer, Consultants



Collen Carmean
Associate Vice Chancellor for Academic
Innovation
University of Washington, Tacoma



Emma Tilson
Student, Salt Lake Community College
and Administrative Coordinator,
WICHE



ANALYTICS AND UNINTENDED CONSEQUENCES

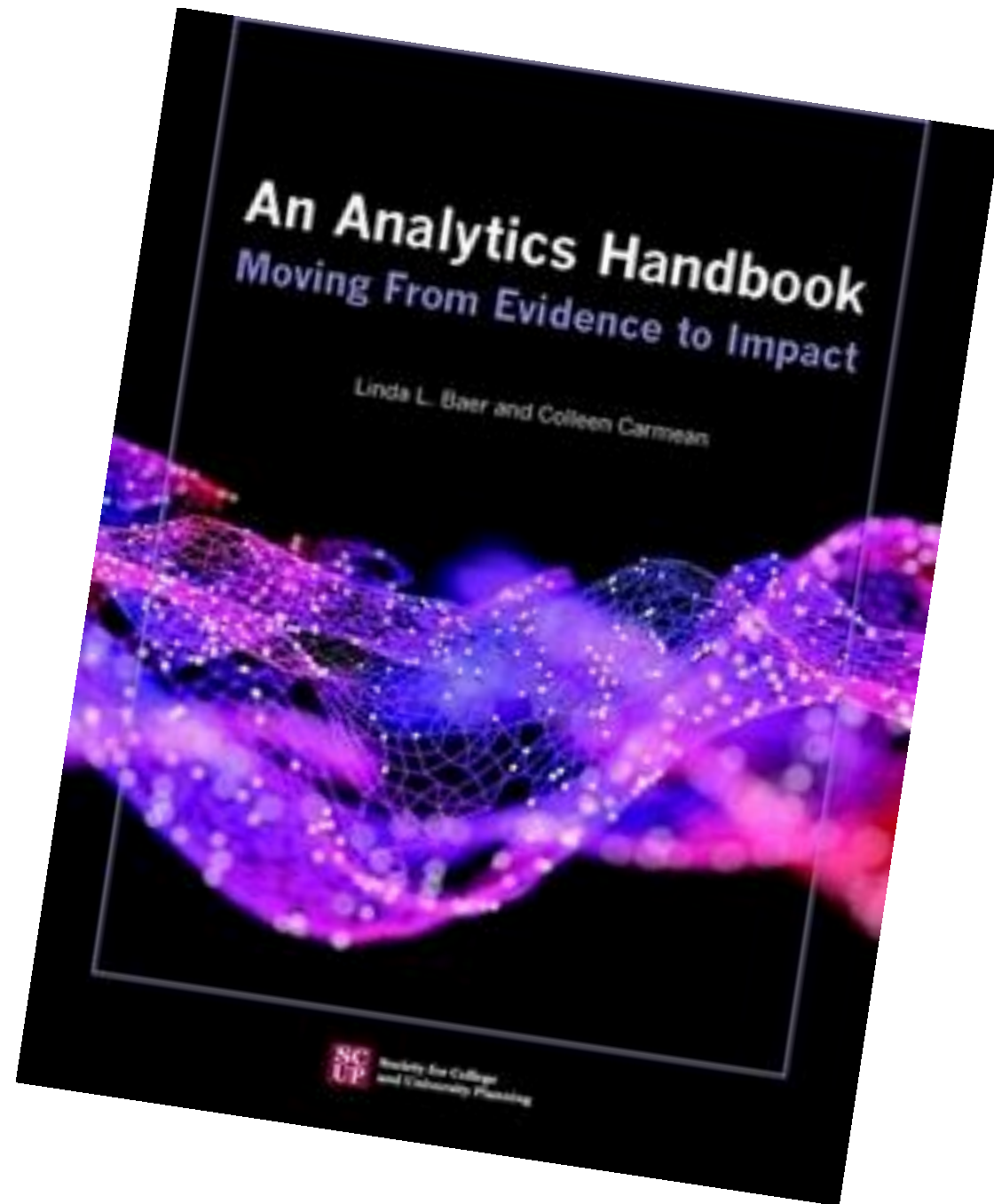
“DO NO HARM”



Linda Baer & Colleen Carmean

An Analytics Handbook:
Moving From Evidence to Impact

Society for College University & Planning
tinyurl.com/analyticsHB



St. Paul, Ramsey County, & St. Paul Public Schools Youth Data-sharing Agreement

Potential of “predictive analytics” in 2014, signed a 3- way joint powers agreement to share youth data.

Predict which families were most likely to slip through the cracks based on zip codes, incomes, truancy numbers, race and other indicators.

But the possibility of labeling children who had not committed a crime as potential future troublemakers worried advocacy organizations.

Agreement ended after 5 years.



On Privacy, Security and Silos

- *University of Washington case study on putting institutional governance and policies in place guiding retrieval, permissions, the data included, and response to insights.*
(Carmean & Lyle, Chapter 4)
- *A Student Response to Analytics*
(Avery Horton, sophomore, Chapter 5)
 - *Transparency*
 - *Security*
 - *Agency*



Ensuring Student Privacy in Predictive Analytics

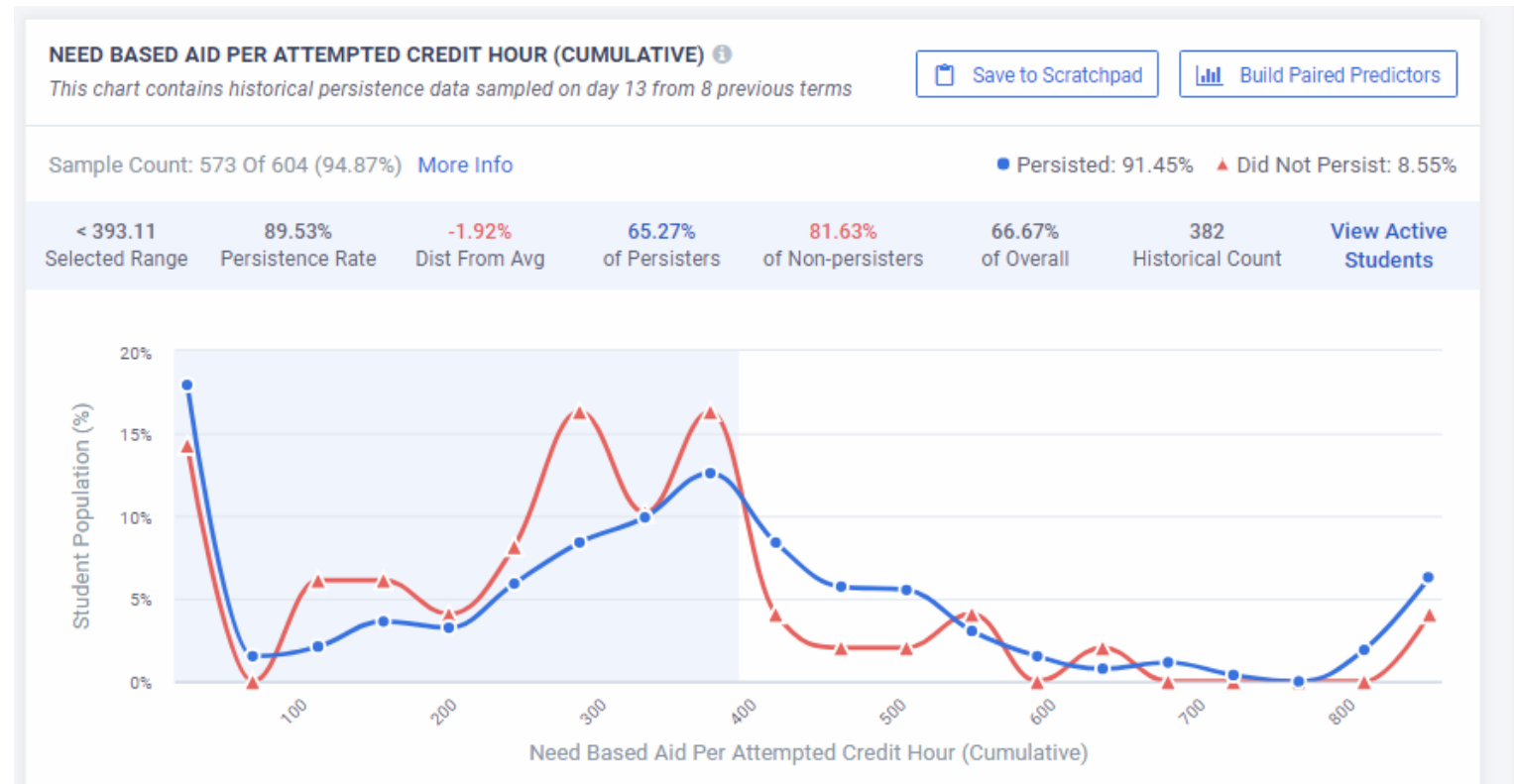
1. Become educated about data privacy.
2. Use data to improve holistically.
3. Use the availability of analytics to ask great questions.
4. Predictives should complement human intuition.
5. Include students in the conversation.



Beyond Implementation of an Analytics Tool

- *USING Insights to Create Change*
 - *Support*
 - *Services*
 - *Outreach Initiatives*

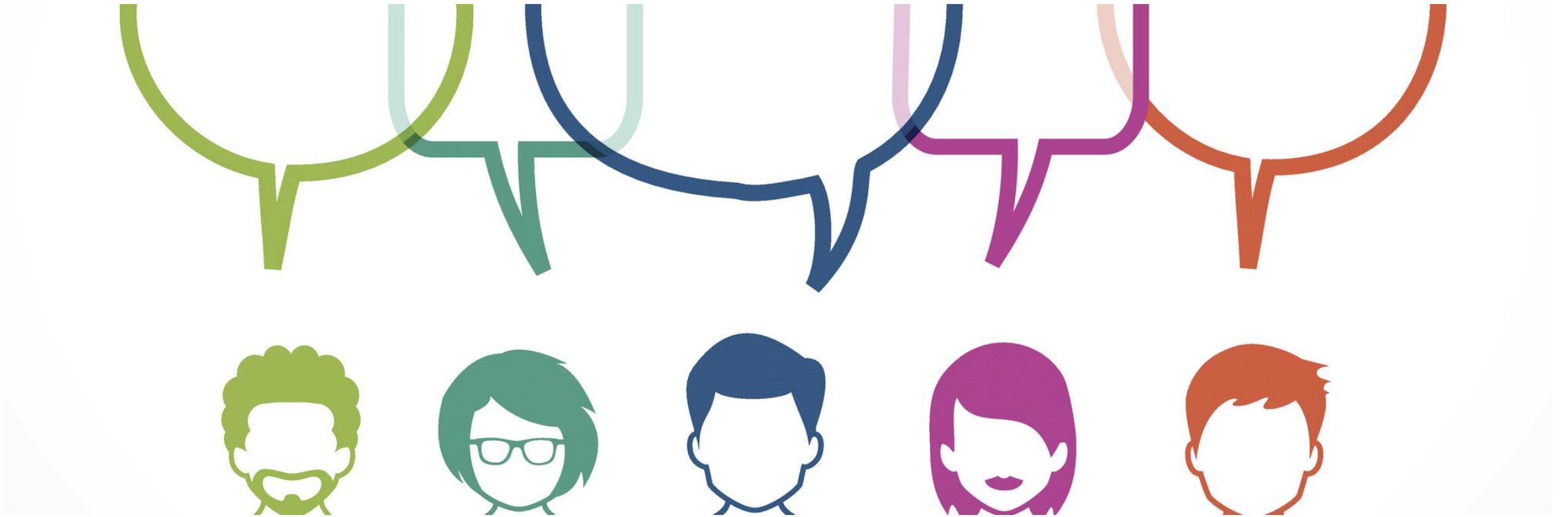
- *Who Creates Change on Your Campus?*
- *Who Seeks and Determines Insights in the Data?*
- *What Institutional Safeguards and Supports for Student Protections are in place?*



Emma Tilson

*Student, Salt Lake Community College
and Administrative Coordinator, WICHE*





Questions from the Audience

Contact Information

Linda Baer lindalbaer0508@gmail.com

Colleen Carmean carmean@uw.edu | [@carmean](#)

Emma Tilson etilson@wiche.edu | [@emtillie](#)

Rob Robinson rob.robinson@civitaslearning.com



Learn More and Stay Connected

Visit WCET's website to learn about our Focus Areas, Initiatives, Events, Membership and Sponsorship:
<http://wcet.wiche.edu/>

Join WCET: learn more about the benefits of joining our national community:

<http://wcet.wiche.edu/join-wcet>

Focus Areas ▼

Initiatives ▼

Events ▼

Get Involved ▼



Learn More and Stay Connected

WCET Leadership Summit: Workforce Partnerships that Work: Creating Public-Private Partnerships that Serve Students, Institutions, Employers, and Communities

June 4-5

Newport Beach, CA

<https://wcet.wiche.edu/events/summits/workforce-partnerships-that-work-2019>

WCET 31st Annual Meeting and Celebration

November 5-7

Denver, CO

Call for proposals opens next week!





ADDITIONAL INFORMATION AND RESOURCES

Access to the resources discussed during this webcast, including the archive, will be available next week.

<http://wcet.wiche.edu/connect/webcasts>



Thank you Supporting Members for your commitment to WCET and eLearning

*Colorado State
University*

*Michigan State
University*

*University of
Missouri -
Columbia/Mizzou
Online*

*University of North
Texas*



Thank you WCET Annual Sponsors

Learn more:
<https://wcet.wiche.edu/get-involved/sponsorship/sponsors>

