



Education Design Lab

Designing Education Toward the Future of Work

Why are we doing this work?

The non-profit Lab designs and tests new school-to-work and higher education models to address *affordability, relevance and portability* in a rapidly changing knowledge economy.



DISCOVER

Passions & Pathways



EXPERIENCE

Efficient & Affordable
Higher Education



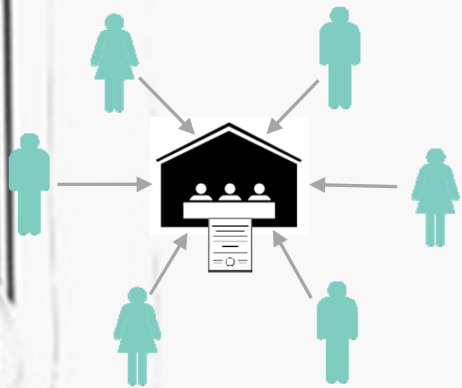
LAUNCH

Workforce-Ready
As A Lifelong Learner

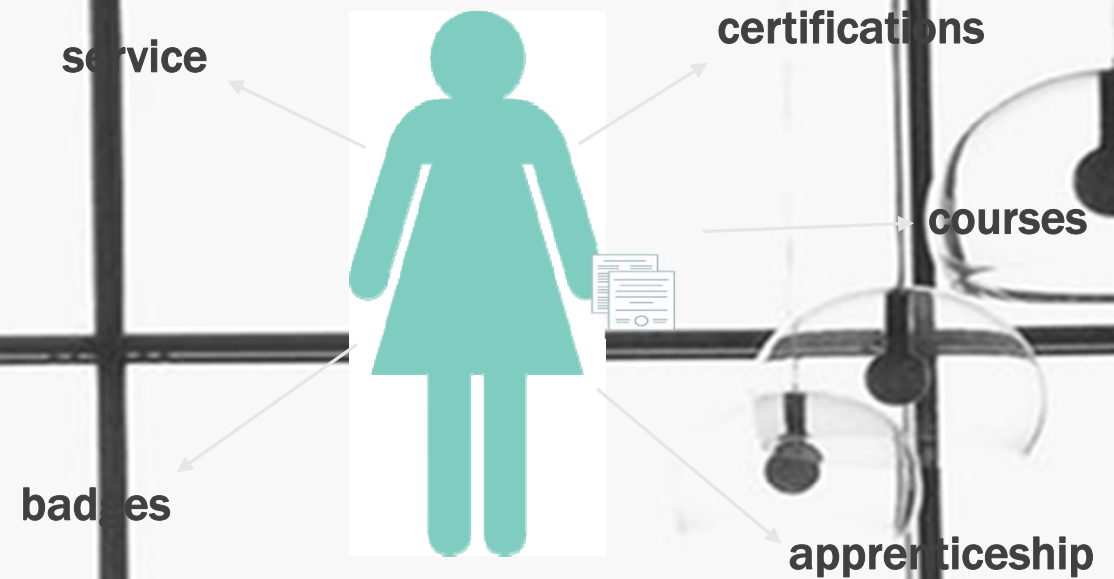
We are focused on underserved communities and the persistent workforce-ready gap.

We are migrating towards a DIY learning ecosystem,
Which is efficient for some, but potentially disastrous for anyone who needs
guidance

Institution-centric



Learner-centric



FutureState

Target areas where the Lab is building out design visions

Micro-credentialing

Student & Faculty Engagement

21st Century Skills

Wrap-around services for DIY learners

Alternative Career Pathways

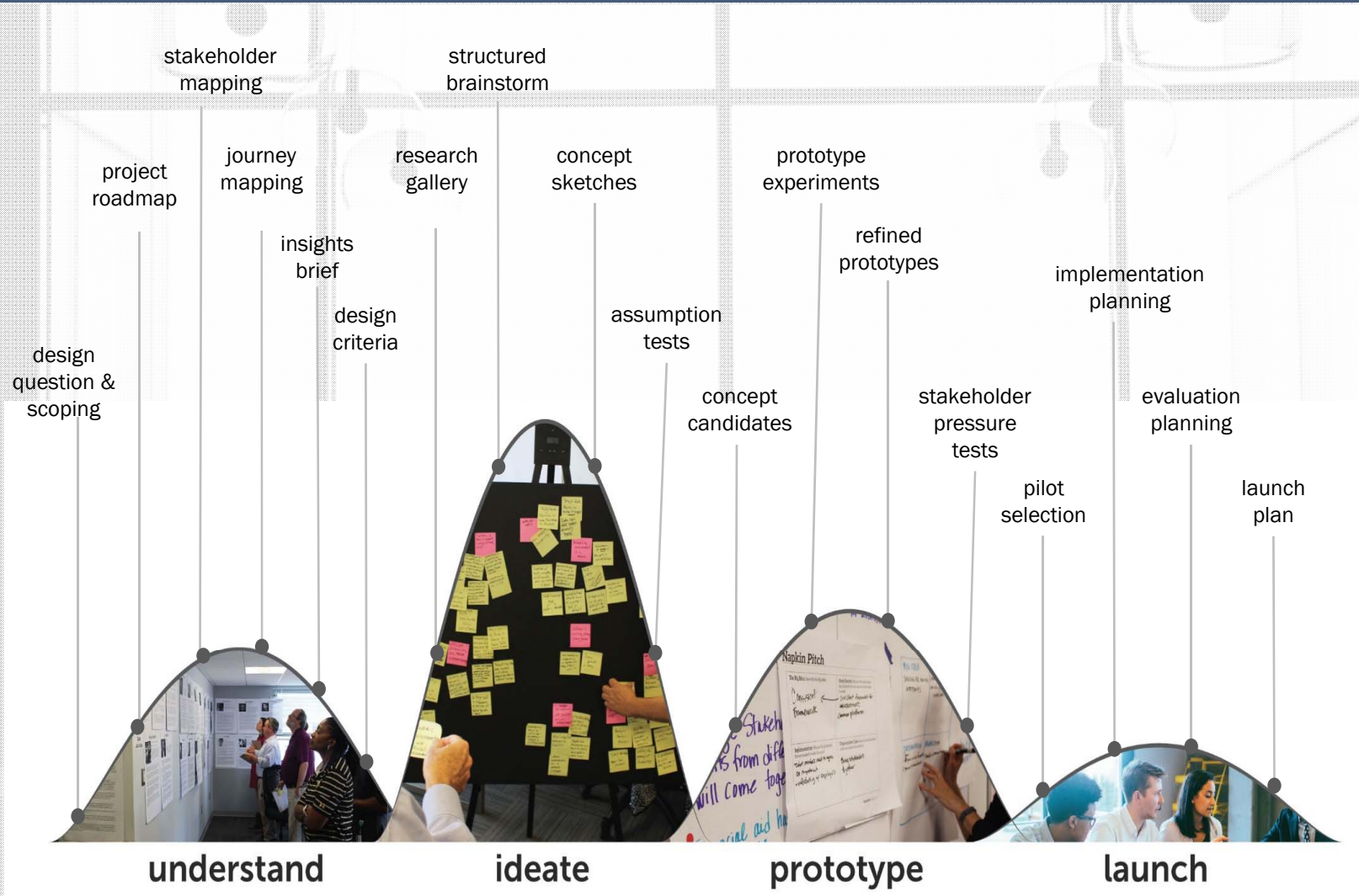
Building Innovative Leadership Capacity

Why Design and Higher Education?

- Fanatically grounded in student **experience**
- Works **across** institutional silos
- Bias **towards action**: rapid prototyping and iteration
- It's ALL about experiments, learning and evidence

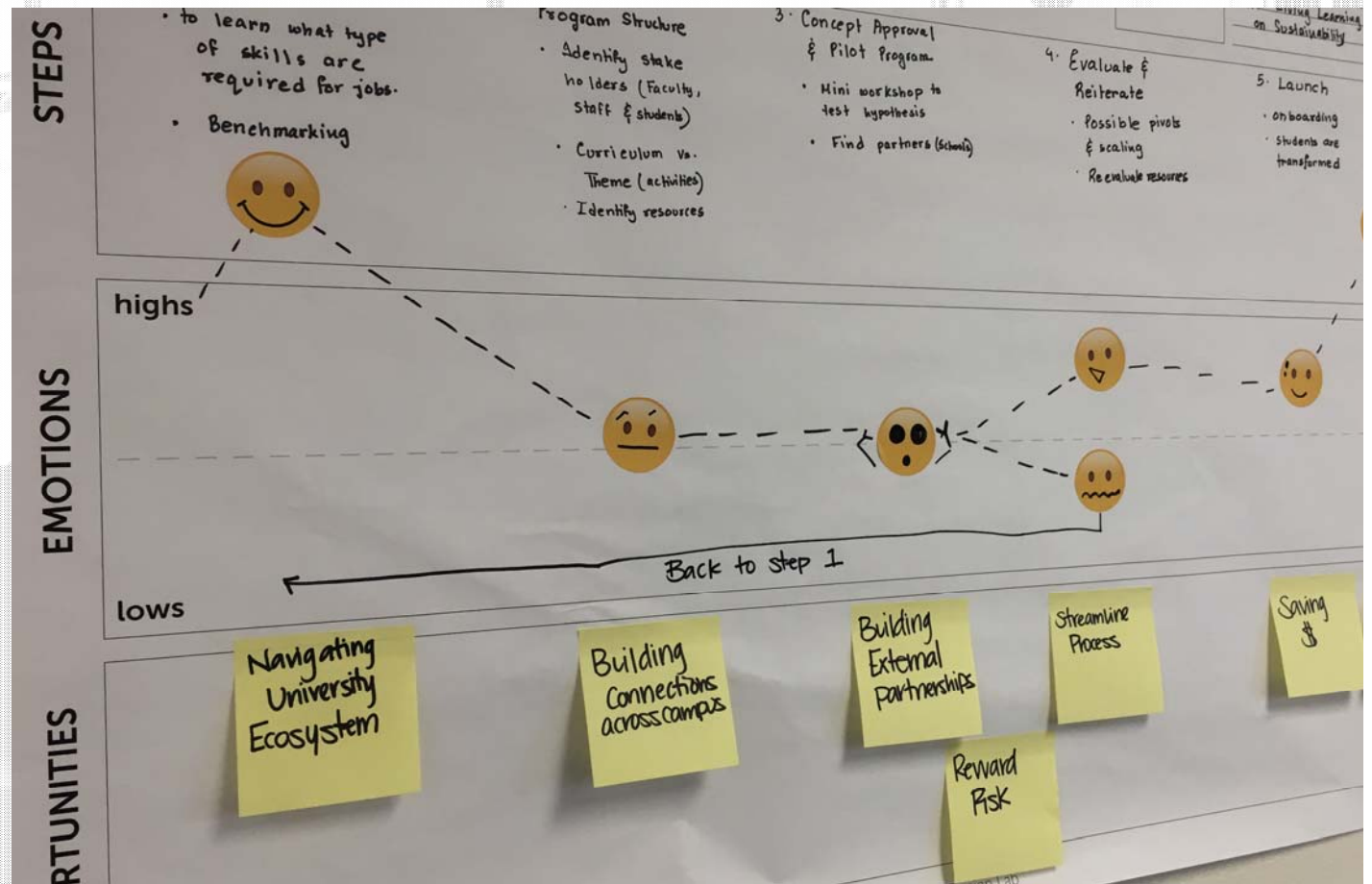
Designing for Higher Education

A design process developed by the Education Design Lab for higher-education innovation



Journey Mapping Innovation on Campus

How might we
design
experiences and
processes to
cultivate a culture
of innovation
that drives
social change
on university?

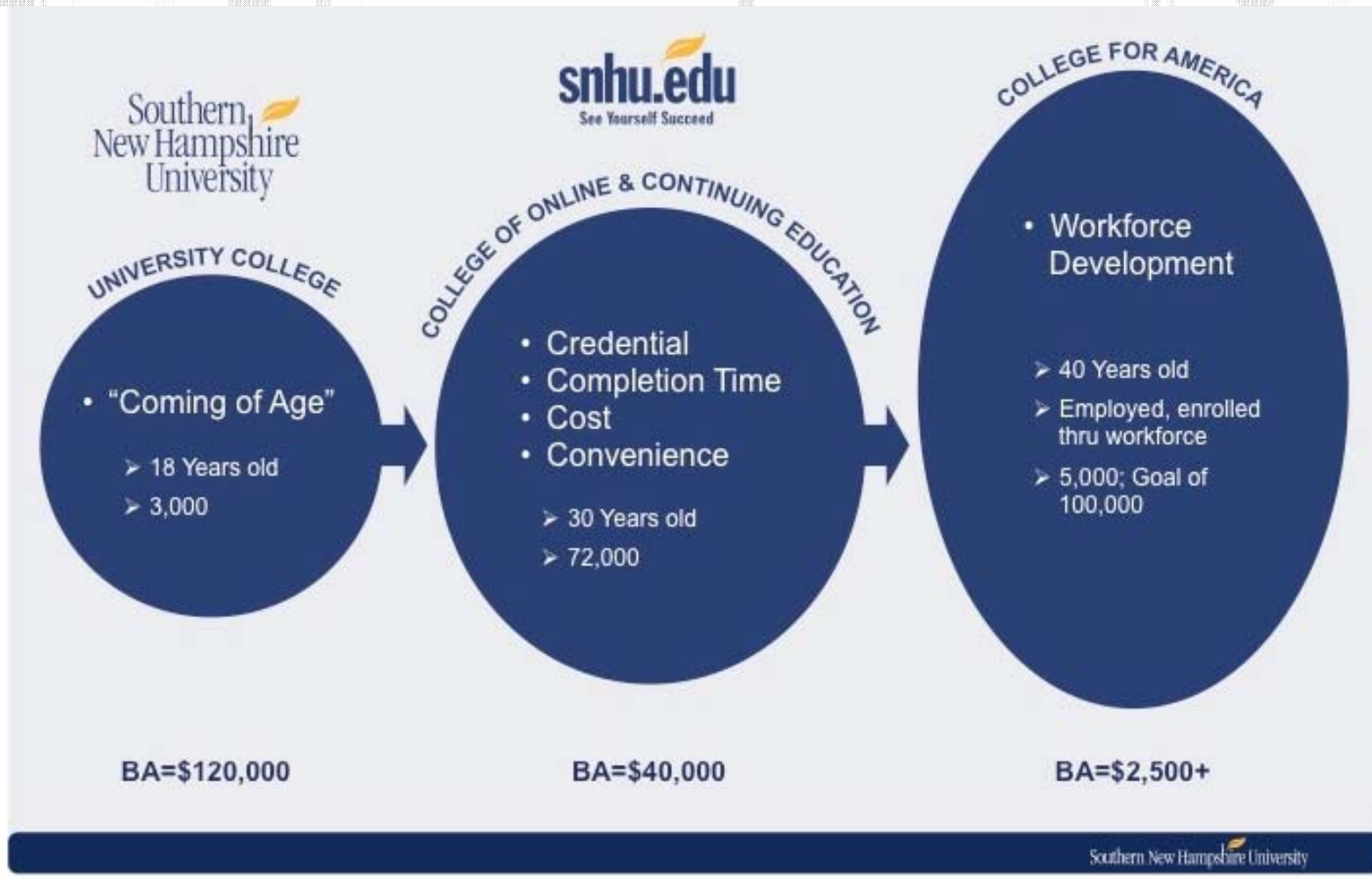


Two ways to Approach Systemic Innovation

- Structural:
 - “Suburban” governance models
 - Intense focus on student journey
- Cultural:
 - Make Innovation and Greenlighting Process Intentional and Visible
 - Make Learning Opportunities Horizontal as well as Vertical
 - Support Faculty and Admin with Design Thinking

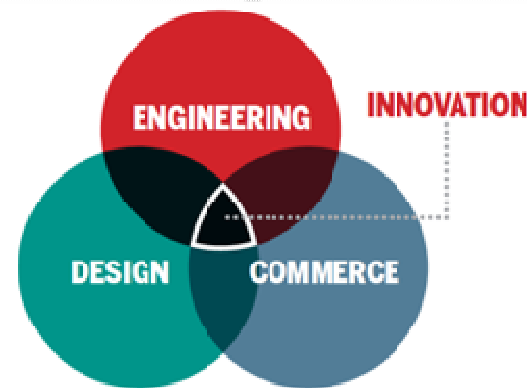
Structural Innovation: Starting a Competency- Based Program

SNHU

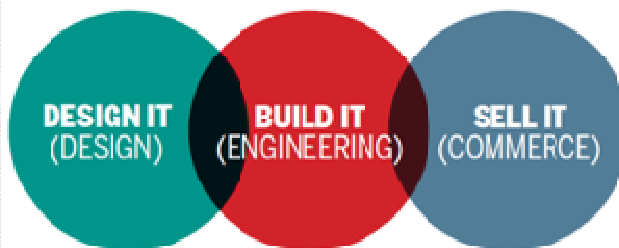


Structural Innovation

Merging Departments at Philadelphia University



Translation #1:
Value Chain

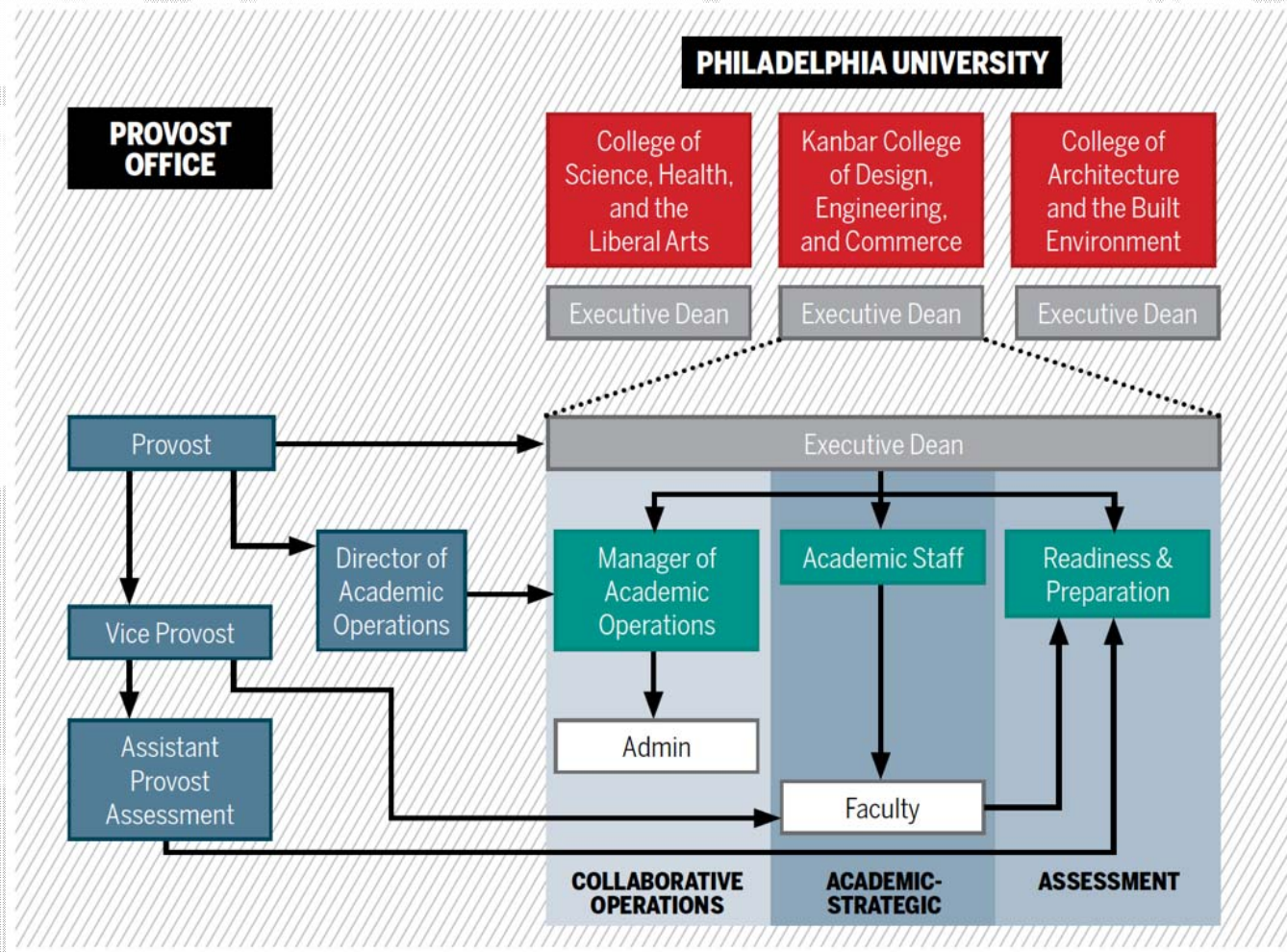


Translation #2:
Discipline Collaboration Levels

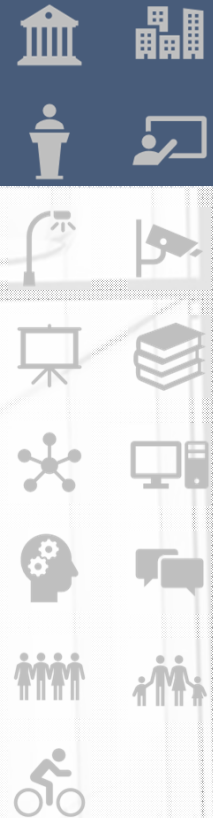


Structural for Innovation

Philadelphia University



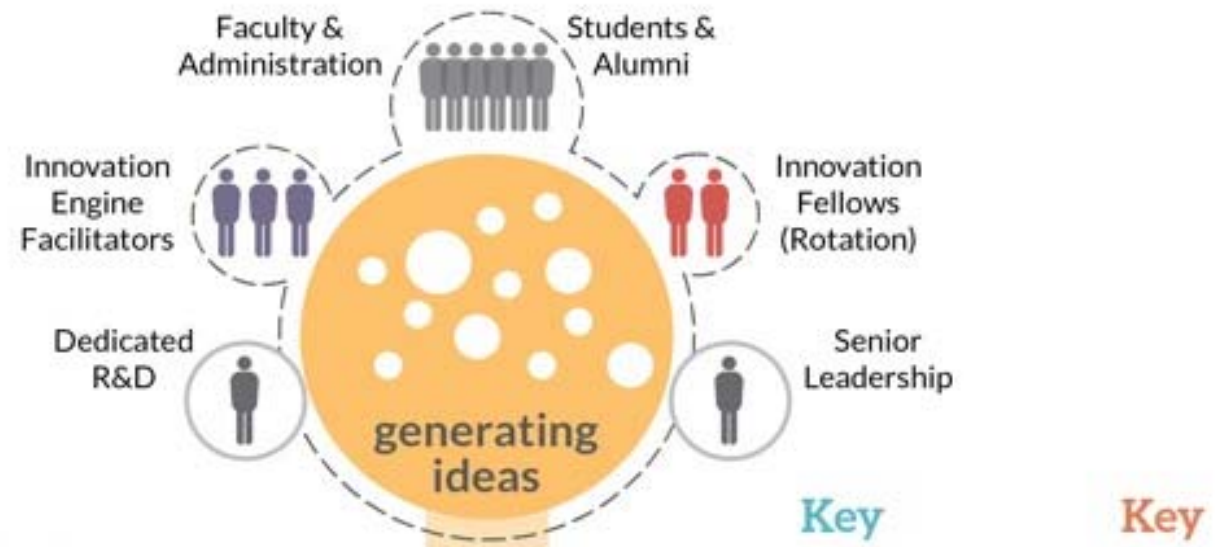
Structural Innovation: Student-Centered University Org Chart



Student

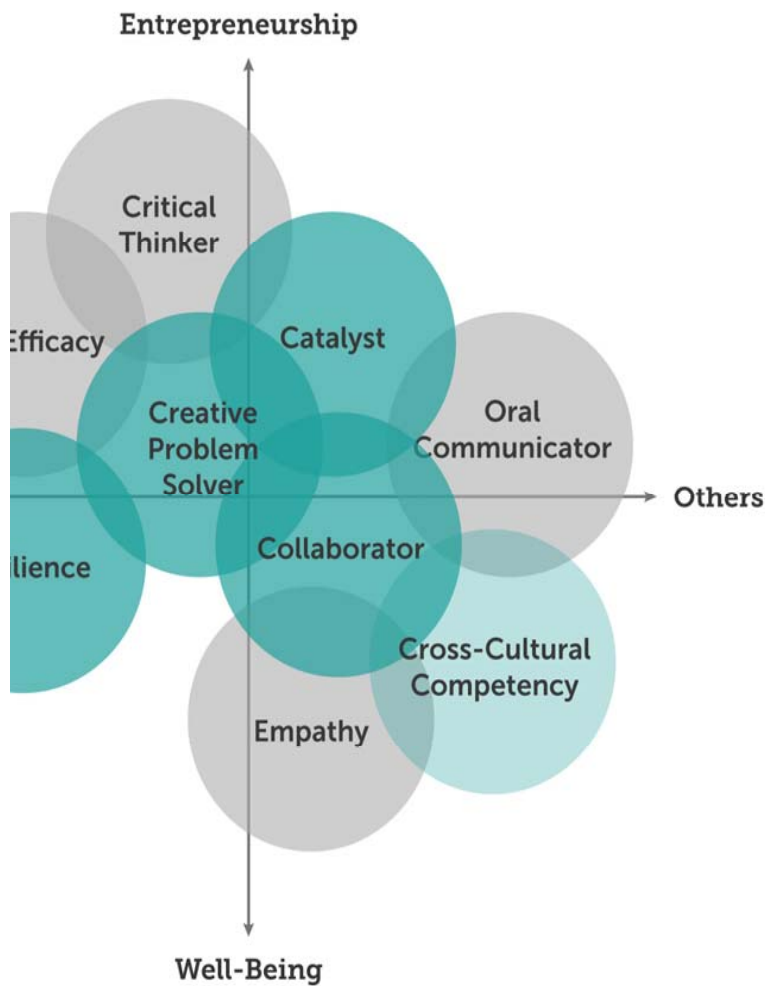
chief learning officer, design engineer, data scientist, content strategist, user experience analyst, information privacy and security professional, learning outcomes and assessment director.

Innovation Engine



Innovation within Existing Structures

“Pop-up” learning communities across 21st Century Skills



Three Categories: Configuration

an education institution's
operating model and
systems



Three Categories: Offering

the learning facilitation and outcomes along with associated services



Three Categories: Experience

A student's day-to-day interactions with what an institution offers and how the institution is configured to deliver it.

