

# WELCOME TO #WCETWEBCAST

*October 4, 2018*

*The webcast will begin shortly.*

*There is no audio being broadcast at this time.*

*An archive of this webcast will be available on the WCET website next week.*



**WHAT IF YOU COULD HIT THE RESET BUTTON  
FOR YOUR INSTITUTION'S ELEARNING  
PROGRAM?**

October 4



# WELCOME!

*Use the question box for questions and information exchange.*

*Archive, PowerPoint, and Resources available will be next week.*

*PowerPoint can be downloaded in the handouts pane.*

*Follow the Twitter feed: #WCETWebcast.*



Megan Raymond  
Director, Programs & Sponsorship  
WCET

[mraymond@wiche.edu](mailto:mraymond@wiche.edu)

[@meraymond](https://twitter.com/meraymond)



# OVERVIEW

**01**

Introductions

**02**

Panelists share background on their eLearning programs and goals.

**03**

Interactive Q&A

**04**

Q&A

**05**

Conclusion



# QUESTIONS FROM THE AUDIENCE

*If you have a question during the presentation, please add your questions to the question box.*

*We will monitor the question box and have time for Q&A after the presentations.*



MODERATOR

**Sasha Thackaberry,**  
Vice Provost, Digital  
and Continuing  
Education,  
Louisiana State  
University



## WHY HERE WHY NOW?

- On a long enough timeline, demographics win.
- Need for continual training, upskilling, and not all of it is “long form” degrees.
- Accreditation concerns - HLC; Scottsdale Community College in Maricopa.
- Decentralization versus centralization.
- Student-centricity versus institutional-centricity.



# BIG THOUGHTS, REAL CHALLENGES

- What does hitting the reset button look like?
- Institutional structure.
- Academic programs & governance.
- Faculty support.
- Learning design.
- Marketing and recruitment.
- Advising and retention.





## PRESENTERS



**Ryan Faulkner**

Director of Online  
Learning Services,  
Academic Affairs,  
College of Eastern Idaho



**Aubra Gantt**

Vice President of Academic  
Outreach and Student  
Success,  
TCC Connect Campus (Tarrant  
County College)



**Loraine Schmitt**

Dean  
Online Learning,  
Portland Community  
College

# PRESENTER 1

**Loraine Schmitt,  
Dean  
Online Learning,  
Portland Community  
College**



# ONLINE LEARNING AT PCC

- Four campuses/one college.
- Decentralized academic structure.
  - Four Deans of Instruction, 20+ Division Deans.
- Online Learning centralized –VP of Academic Affairs.
- Funding – General fund and fee-based.
- Collective bargaining environment.
- 5,300 FTE, about 24% Credit FTE.
- 2200 sections & 43% credit students.
- 60 disciplines, CTE/LDC with 550+ online faculty.
- Web only students:
  - 64% Female – more female
  - 70% White – less diverse
  - 68% over age 25 - older students

[www.pcc.edu/online](http://www.pcc.edu/online)



# ONLINE LEARNING DIVISION

- Course development, quality, faculty development, and training.
- Online accessibility and media.
- Online student services.
- Technology management and support.
- Instructional technology support.
- District-wide schedule coordination.
- Annual planning guide/schedule for all online courses.
- Academic advising – web only students.
- Required start guide for new students.
- Targeted communication/resource center.
- Proctoring support.
- Online tutoring, faculty/student help desk.



## PRESENTER 2

**Ryan Faulkner,  
Director of Online  
Learning Services,  
Academic Affairs,  
College of Eastern  
Idaho**



# ONLINE LEARNING AT CEI

- Idaho's newest community college.
- Formerly Eastern Idaho Technical College founded in 1969.
- Nestled between two Universities.
- Enrollment sharply increasing.
- One campus – three outreach centers.
- Online Learning centralized – VP of Instruction & Student Affairs.
- Online Dept = One employee.
- First fully online courses began summer of 2018.
- 12 Fully Online & 8 Hybrid (Fall 2018).
- Roughly 1/3 of students taking online/hybrid course.
- Focusing on pathway to fully online AA degree.



# CEI - CREATION OF ONLINE PROGRAM

- Reaching out to other institutions.
- Faculty buy-in.
- Creating/updating online policies.
- Formulating a plan to develop and create gen ed online courses.
- Consulting the NWCCU guidelines and suggestions for online courses.
- Creation of a curriculum committee.
- Creation of a faculty online teaching group – moderated by a faculty member.
- Creation of an online learning steering committee.
- Joining National and Regional organizations.
- And FINALLY...



**Hanging on for dear life and enjoying  
the ride!**





## PRESENTER 3

**Aubra Gantt,  
Vice President of  
Academic Outreach  
and Student Success,  
TCC Connect Campus  
(Tarrant County  
College)**



# ONLINE LEARNING AT TCC

- Six campuses/one college.
- Decentralized academic structure.
  - One Dean of Academic Affairs, 2 Part-time Division Deans
- Online Learning centralized- Campus.
- Funding – General fund and fee-based.
- <https://www.tccd.edu/locations/tcc-connect-campus/>
- 3,500 FTE.
- 1900 + sections and 100% credit students.
- 30 disciplines. 400 + online faculty.
- TCC Connect Campus students:
  - 68.9% Female
  - 31.1% Male
  - 71% over age 25 –non-traditional students



# ONLINE LEARNING CAMPUS

- Online accessibility and media.
- Online student services.
- District wide student services schedule coordination.
- Instructional technology support.
- District-wide schedule coordination
- Online Student workshop series (Links to Success.
- Community and academic outreach.
- Annual planning guide/schedule for all online courses.
- Academic advising – for all TCC students.
- Required new student orientation for FTIC students.
- Optional online orientation for my(TCC) blackboard for all students.
- Tier one student support/resource center.
- Online proctoring support.
- Online tutoring, faculty/student help desk.



## DISCUSSION



**Ryan Faulkner**

Director of Online  
Learning Services,  
Academic Affairs,  
College of Eastern Idaho



**Aubra Gantt**

Vice President of Academic  
Outreach and Student  
Success,  
TCC Connect Campus (Tarrant  
County College)

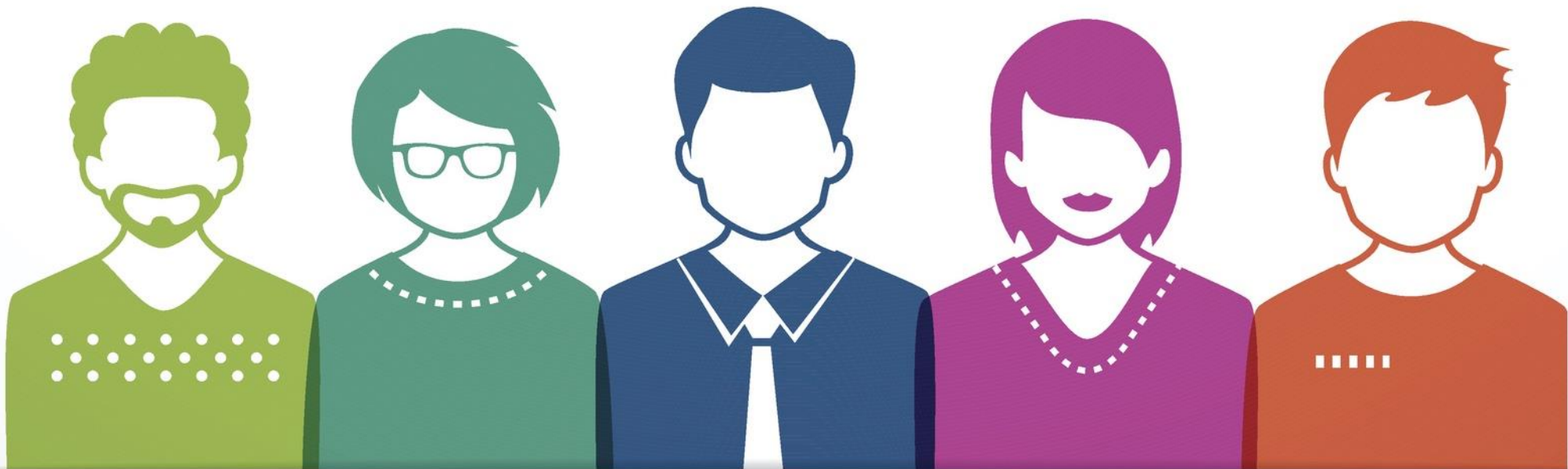


**Loraine Schmitt**

Dean  
Online Learning,  
Portland Community  
College



# QUESTIONS FROM THE AUDIENCE



# CONTACT INFORMATION

Ryan Faulkner: [ryan.faulkner@cei.edu](mailto:ryan.faulkner@cei.edu)

Aubra Gantt: [Aubra.Gantt@tccd.edu](mailto:Aubra.Gantt@tccd.edu) | [@ganttaj](#)

Loraine Schmitt: [loraine.schmitt@pcc.edu](mailto:loraine.schmitt@pcc.edu) |  
[@LoraineSchmitt1](#)

Sasha Thackaberry: [thackaberry@lsu.edu](mailto:thackaberry@lsu.edu) |  
[@sashatberr](#)



# LEARN MORE AND STAY CONNECTED

Visit WCET's website to learn about our  
Focus Areas, Initiatives, Events,  
Membership and Sponsorship:  
<http://wcet.wiche.edu/>

Join WCET: learn more about the benefits  
of joining our national community:  
<http://wcet.wiche.edu/join-wcet>

Focus Areas ▼

Initiatives ▼

Events ▼

Get Involved ▼



# LEARN MORE AND STAY CONNECTED



**WCET 30<sup>th</sup> Annual Meeting and Celebration**

**October 23-25**

**Portland, OR**

<https://wcet.wiche.edu/events/30th-annual-meeting-2018>







## ADDITIONAL INFORMATION AND RESOURCES

Access to the resources discussed during this webcast, including the archive, will be available next week.

<http://wcet.wiche.edu/connect/webcasts>



## UPCOMING WEBCASTS



### [The Cheating Economy and Integrity](#)

- October 16th, 2018  
WCET has had an active voice on academic integrity and cheating since 2008. In 2018, academic integrity is threatened by a notable increase in the commercialization of academic dishonesty, to include contract cheating and the widespread online distribution by third-party websites of educational materials...

### [Web Accessibility: Trick or Treat?](#)

- October 31st, 2018  
As a part of “The Year of Accessibility”, the Online Learning Consortium and WCET continue to collaborate to bring our communities resources on the topic of accessibility. Join us on Halloween for this upcoming webinar!



THANK YOU SUPPORTING  
MEMBERS FOR YOUR  
COMMITMENT TO WCET  
AND E-LEARNING

*Colorado State  
University*


*Lone Star College  
System*

*Michigan State  
University*

*University of  
Missouri -  
Columbia/Mizzou  
Online*



# THANK YOU WCET ANNUAL SPONSORS



**WILEY**  
EDUCATION SERVICES

---




BARNES & NOBLE EDUCATION **LoudCloud** **LEARN**  
**Pearson** **CENGAGE** **Blackboard**  
THE CHRONICLE  
of Higher Education®

---



**VitalSource**

---



**ED MAP** **PeopleGrove** **Realizeit** **wyzont**  
Powering intelligent pathways to mastery

---



**Drexel UNIVERSITY** **intellus LEARNING**  
**@-LITERATE** **LearningMate** **iDesign**  
In-Kind

---

**YOU**  
at COLLEGE