

WELCOME TO #WCETWEBCAST

August 16, 2018

The webcast will begin shortly.

There is no audio being broadcast at this time.

An archive of this webcast will be available on the WCET website next week.



LEADING LARGE-SCALE OER INITIATIVES: STORIES FROM THE TOP

August 16



WELCOME!

Use the question box for questions and information exchange.

Archive, PowerPoint, and Resources available will be next week.

PowerPoint can be downloaded in the handouts pane.

Follow the Twitter feed: #WCETWebcast.



Megan Raymond
Assistant Director, Programs & Sponsorship
WCET

mraymond@wiche.edu

[@meraymond](https://twitter.com/meraymond)



OVERVIEW

01

Introductions

02

Moderated
discussion

03

Q&A

04

Conclusion



QUESTIONS FROM THE AUDIENCE

If you have a question during the presentation, please add your questions to the question box.

We will monitor the question box and have time for Q&A after the presentations.



MODERATOR

Tanya Spilovoy
Director of Open Policy,
WCET



PRESENTERS



Mark McBride
Library Senior Strategist,
SUNY Connect



Tina Parscal
Executive Director,
CCCOOnline, Colorado Community
College System



Kara Van Dam
Vice Provost and Dean of the
Undergraduate School,
University of Maryland University
College



DISCUSSION QUESTION 1

Briefly share an overview of your large-scale OER Initiative.



DISCUSSION



Mark McBride
Library Senior Strategist,
SUNY Connect



Tina Parscal
Executive Director,
CCCOOnline, Colorado Community
College System



Kara Van Dam
Vice Provost and Dean of the
Undergraduate School,
University of Maryland University
College



DISCUSSION QUESTION 2

How will you sustain it
(institutional
culture/funding/momentum)?



DISCUSSION



Mark McBride
Library Senior Strategist,
SUNY Connect



Tina Parscal
Executive Director,
CCCOOnline, Colorado Community
College System



Kara Van Dam
Vice Provost and Dean of the
Undergraduate School,
University of Maryland University
College



DISCUSSION QUESTION 3

What is the overall impact on students and/or faculty?



DISCUSSION



Mark McBride
Library Senior Strategist,
SUNY Connect



Tina Parscal
Executive Director,
CCCOOnline, Colorado Community
College System



Kara Van Dam
Vice Provost and Dean of the
Undergraduate School,
University of Maryland University
College



DISCUSSION QUESTION 4

If you knew then what you know now, what would you do differently?



DISCUSSION



Mark McBride
Library Senior Strategist,
SUNY Connect



Tina Parscal
Executive Director,
CCCOOnline, Colorado Community
College System

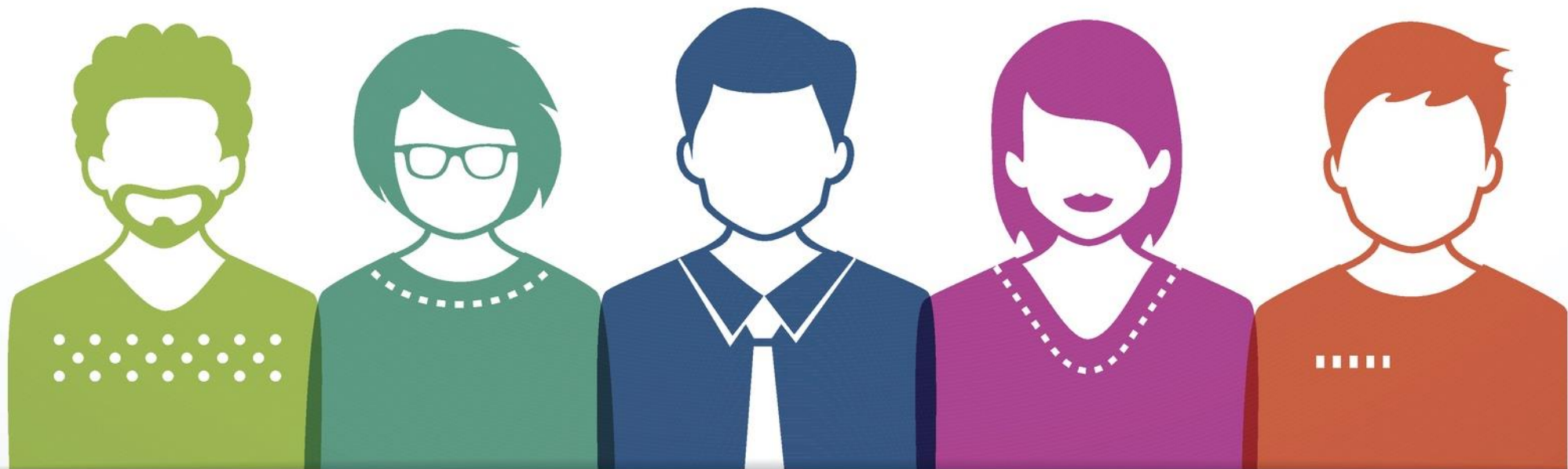


Kara Van Dam
Vice Provost and Dean of the
Undergraduate School,
University of Maryland University
College





QUESTIONS FROM THE AUDIENCE



CONTACT INFORMATION

Kara Van Dam	kara.vandam@umuc.edu
Mark McBride	Mark.McBride@suny.edu
Tina Parscal	Tina.Parscal@cccs.edu @tjp303
Tanya Spilovoy	tspilovoy@wiche.edu @TanyaSpilovoy



LEARN MORE AND STAY CONNECTED

Visit WCET's website to learn about our
Focus Areas, Initiatives, Events,
Membership and Sponsorship:
<http://wcet.wiche.edu/>

Join WCET: learn more about the benefits
of joining our national community:
<http://wcet.wiche.edu/join-wcet>

Focus Areas ▼

Initiatives ▼

Events ▼

Get Involved ▼



LEARN MORE AND STAY CONNECTED



WCET 30th Annual Meeting and Celebration

October 23-25

Portland, OR

<https://wcet.wiche.edu/events/30th-annual-meeting-2018>





ADDITIONAL INFORMATION AND RESOURCES

Access to the resources discussed during this webcast, including the archive, will be available next week.

<http://wcet.wiche.edu/connect/webcasts>



THANK YOU SUPPORTING
MEMBERS FOR YOUR
COMMITMENT TO WCET
AND E-LEARNING

*Colorado State
University*

Cooley LLP

*Lone Star College
System*

*Michigan State
University*

*University of
Missouri -
Columbia/Mizzou
Online*

*University of North
Texas*



THANK YOU WCET ANNUAL SPONSORS

WILEY
EDUCATION SERVICES



BARNES & NOBLE | **LoudCloud**



LEARN

Pearson

CENGAGE

Blackboard

THE CHRONICLE
of Higher Education®

VitalSource



ED MAP

Realizeit
Powering intelligent pathways to mastery



intellus
LEARNING

PeopleGrove

FlatWorld

TOP HAT

Drexel
UNIVERSITY



LearningMate™

@-LITERATE **iDesign**

In-Kind

YOU
at COLLEGE